

# NODA News

*Northern Ohio  
Dressage Association*

## **Cover**

The 12 year old Dutch Warmblood gelding , Rens, ridden by Janeen Langowski-Grava, owned by Dee Liebenthal. Photo by Dee Liebenthal

## **Inside**

The A,B,C's (and D's) of Dressage Show Entries, page 9

Member Spotlight , NODA's president, Dee Liebenthal, page 12

Saddle Fit, How Does a Rider Know? Page 20.

NODA USDF Year-End Award Winners, pages 25 and 26

The First Annual Dusty Boots Derby Benefit  
An Extravaganza to Benefit Valley Riding, Inc.  
page 28

## 2012 NODA Executive Board

### President

Dee Liebenthal  
330-562-8455  
[president@nodarider.org](mailto:president@nodarider.org)

### Vice President

Niki Sackman  
[vp@nodarider.org](mailto:vp@nodarider.org)

### Treasurer

Jennifer Kick  
440-487-1925  
[treasurer@nodarider.org](mailto:treasurer@nodarider.org)

### Secretary

Patti Valencic  
[secretary@nodarider.org](mailto:secretary@nodarider.org)

### Parliamentarian

Dale Lappert  
330-527-4683  
[parliamentarian@nodarider.org](mailto:parliamentarian@nodarider.org)

## Directors at Large

Alice Brightup  
[Alice-DAL@nodarider.org](mailto:Alice-DAL@nodarider.org)

Barb Soukup  
[Barb-DAL@nodarider.org](mailto:Barb-DAL@nodarider.org)

Kathy Kirchner  
330-995-6010  
[Kathy-DAL@nodarider.org](mailto:Kathy-DAL@nodarider.org)

Gail Patton  
440-442-5256

Mary Dana Prescott  
440-256-8858



Dee & Rens

## Greetings from the President

**D**ear NODA Members, acknowledgment when I finally get it right. At the same time, I don't want my instructor to tell me only what she thinks I want to hear -- I want the truth. I can't improve without the truth, no matter how it might hurt in the moment, as it then becomes a challenge. I must get it right! I can get it right! The best reward, however, is the one I get from my horse. If I get it right then he does it right! There is no better or more rewarding feeling in riding.

Has the state of Ohio changed its location? Have we moved closer to the equator? What the heck has happened? 70 degrees in mid March and not for just one day, but for consecutive days. What will summer be like? I am not complaining, though. I was able to give my horse a very necessary bath before the LEC Winter Dressage Show and I didn't have to worry about him being chilled. Unbelievable.

Inside this month's *NODA News* you will find good information on saddles and saddle fitting from Heather Soones-Booher of Saddles 101. Equestrians in our area are lucky to have access to several well trained saddle fitters. I hope you enjoy the article by NODA member Heather Soones-Booher who is from right across the PA border near Pittsburgh. The health and well being of our horses' backs are vital to their happiness in work, and your saddle is essential to that happiness. The saddle can't fit just you; it has to fit the horse, too. Once you have the perfect fit for yourself and your horse, you also must maintain that fit with periodic checks from your saddle fitter. The flocking shifts and gets flat and will need adjustment from time to time. Don't assume that if it fits when you bought it, it will always fit. Your horse and your saddle will change with use and time.

If you haven't yet, I recommend that you read a short article in March's *USDF Connection* by USDF VP Beth Jenkins titled, "Who's Teaching Your Teacher?" I think this is a question that we should all be asking ourselves, whether Professional, AA or Junior/Young Rider. Please keep this in mind as NODA begins plans for hosting USDF's Instructor Certification Workshops. If you are interested in helping NODA get these workshops off the ground, please contact Marcia Doyle at [Marcia-edu@nodarider.org](mailto:Marcia-edu@nodarider.org). Along with the above article goes an article titled, "The Carrot or the Stick." In what style do you learn best? Do you go for the challenge or the reward, or a combination of both?

These two articles go hand-in-hand and are important reads for each and every one who is trying to become a better, kinder rider. I for one don't want to be constantly yelled at, and I do like

There is also a great article by Taya Workum-Byers, NODA's Schooling Show Secretary, titled "The ABC's and (D's) of Dressage Show

## 2012 Committees

### Awards Committee

**Chair:**

Janeen Langowski-Grava: 440-666-6182  
[yearend-awards@nodarider.org](mailto:yearend-awards@nodarider.org)

### Year-End Banquet

**Chair:**

Carol Cassano: 216-272-185  
[banquet@nodarider.org](mailto:banquet@nodarider.org)

### Communications

**Correspondence Secretary:**

Rosemary Rufo: 330-527-7836  
[correspondence@nodarider.org](mailto:correspondence@nodarider.org)

### Newsletter Editors:

Elizabeth Bross: 814-881-2786  
[Elizabeth-editor@nodarider.org](mailto:Elizabeth-editor@nodarider.org)  
Layout/Content  
&

Mosie Welch: 330-618-5838  
[Mosie-editor@nodarider.org](mailto:Mosie-editor@nodarider.org)  
Advertising /Content

### Webmaster and Facebook:

Linda Cooley: 440-564-8118  
[webmaster@nodarider.org](mailto:webmaster@nodarider.org)

### Competitions Committee

**\*\*Recognized Show\*\***

**Chair:**

Niki Sackman:  
[Rs-chair@nodarider.org](mailto:Rs-chair@nodarider.org)

**Manager:**

Robyn Ambrose: 440-858-2164  
[rs-manager@nodarider.org](mailto:rs-manager@nodarider.org)

**Show Secretary:**

Mary Lou Gallagher: 216-251-7469  
[rs-secretary@nodarider.org](mailto:rs-secretary@nodarider.org)

**Volunteer Coordinator:**

Karen Eisenhauer: 330-220-4705  
[rs-vol-coord@nodarider.org](mailto:rs-vol-coord@nodarider.org)

**Sponsors/Advertising:**

Judy Cageao-Catania: 440-547-8196  
&  
Suzanne Carlton: 216-554-6748  
[sponsors@nodarider.org](mailto:sponsors@nodarider.org)

**External Relations**

Lisa Gorretta: 440-543-8682  
[ext-relations@nodarider.org](mailto:ext-relations@nodarider.org)

## 2012 Committees

### Historical Committee

Lora Szloh: 440-845-3974  
[historian@nodarider.org](mailto:historian@nodarider.org)

**\*\*Schooling Show\*\***

**Chair:**

Chris Goodall: 440-729-2984  
[schoolingshow@nodarider.org](mailto:schoolingshow@nodarider.org)

**Co-Chair:**

Krista Warnick: 440-413-2213  
[ss-chair@nodarider.org](mailto:ss-chair@nodarider.org)

**Show Secretary:**

Taya Workum-Byers: 440-478-8658  
[ss-secretary@nodarider.org](mailto:ss-secretary@nodarider.org)

**Volunteer Coordinator:**

Gail Patton: 440-442-5256

**Educational Programs**

**Co-chairs:**

Marcia Doyle: 330-562-8456  
[Marcia-Edu@nodarider.org](mailto:Marcia-Edu@nodarider.org)  
&  
Berni Moauro: 330-467-0619  
[Berni-Edu@nodarider.org](mailto:Berni-Edu@nodarider.org)

**Membership and Handbook**

**Chair:**

Fran Cverna: 440-834-1774  
[membership@nodarider.org](mailto:membership@nodarider.org)

**Junior & Young Rider Liaison:**

Cassandra Hummert-Johnson  
216-926-8789  
[jr-yr@nodarider.org](mailto:jr-yr@nodarider.org)

**Member Liaison:**

Kathy Kirchner: 330-995-6010  
[MemberRep@nodarider.org](mailto:MemberRep@nodarider.org)

**Professional Liaison:**

Mary Dana Prescott: 440-256-8858

NODA's Board welcomes all comments and opinions regarding NODA activities, shows and policies. Please contact member liaison Kathy Kirchner.

Monthly board meetings are held the second Monday of each month from 7 to 9 pm at Panera Bread, 6130 Kruse Drive in Solon. Members are welcome to attend. See monthly calendar for details as on occasion the location of the meeting may change.

## Advertisers

Buckeye Nutrition

Buckeye Veterinary Services

Cross Winds Farm

Dusty Boots Derby Benefit

Equestrian Pursuits

Holland Horse Tack

Jane Kelly Dressage

North Crest Equestrian Center

Perfect World Dressage

Rivendel Farm

Rocky River Stables

Saddles 101

Shadow Facs Farm

The Dressage Foundation

The Paddock Saddlery

The Visiting Vet

Topline Stables at Walden

Western Reserve Farm Cooperative

Woodwind Farm

Xhalt Equestrian Center

Entries." You might want to keep the information at your fingertips to use when filling out your forms. Remember that the two most important points to remember are: 1.) it is very important to keep the show secretary happy, and 2.) it is very important to keep the show secretary happy.

BIG CONGRATULATIONS go to Linda Cooley, our talented webmaster, and her wonderful mare, KnightHawke, for being awarded the 2011 FSHR (Friesian Sport Horse Registry) Second Level Open Competition Champions. And we all thought you only had time to work on the NODA website. NODA is very proud of both of you.

If you are interested in riding in the USDF Lilo Fore Clinic you can begin applying now through April 27th. Please check out the ad for the USDF/Nutrena Adult Clinic in this issue, the NODA website [www.nodarider.org](http://www.nodarider.org), and the USDF website [www.usdf.org/education/clinics/adult/index.as](http://www.usdf.org/education/clinics/adult/index.as). I know that you will support your GMO by attending as a rider or as an auditor. This is a two-day educational event at LEC that is well priced. Don't miss it. We want NODA to be well represented. Plan now to attend!

Check out the NODA USDF Year-End awards winners. I am sure you won't be surprised that NODA is well represented. Congratulations to all the award winners. NODA is proud to call you all members.

Do you want a great place to enjoy the Kentucky Derby on May 5th? I suggest that you consider getting a group together from your stable and attend ***The First Dusty Boots Derby Extravaganza*** to benefit Valley Riding, Inc. Information is provided on page 27 by Jeni Gaffney, DVM. It sounds like there will be lots of fun, and for a very good cause. Come for a mint julep, good food, good friends, a silent auction for really wonderful items, and the Derby on a wide screen TV.

NODA is still looking for some volunteers interested in filling some key spots with NODA. We have an immediate need for someone to head up the Sponsorships and Ads for the Recognized Shows. Should you think you would be taking on the job with

no help, fear not. We have the experience of Suzanne Carlton and others that will help. You will not be alone. Please volunteer.

We also need two people to take over the Schooling Shows in 2013. These positions are paid. Each position could earn \$200 or more for every show. Want to earn extra cash next summer? Come shadow this season and learn what it is all about. If you are interested please contact Chris Goodall, [schoolingshow@nodarider.org](mailto:schoolingshow@nodarider.org). See the ad in this month's Newsletter.

We are having an art contest again this year. See the details on page six. This year the winner will have their art work on the cover of the Recognized Shows' Program and also on the Volunteer T-Shirt. This was a big success a couple of years ago, so get out your pencil/pens/brushes and create something appropriate for NODA's Recognized Shows.

Almost everyone is home from Florida so there is a full contingent of NODA members out there to support our wonderful GMO's shows and educational events. As always we welcome any help you can give. Send us your advice or comments, work on a committee, write an article, or volunteer more than your required four hours. Remember to get your four required volunteer hours in for 2012 year-end awards (for all those really busy Professionals out there, encourage your students to volunteer for themselves and for you). Remember that this is your organization and it cannot survive with you. Please volunteer often!

Happy April

Dee Liebenthal  
President

**REMINDER**  
The next NODA Board meeting will be held  
TUESDAY, APRIL 10th.

**CORRECTION**  
Laura Wolf's last name was misspelled in the  
March memorial article due to an editing error.



# Northern Ohio Dressage Association

Dressage 2012 & Dressage Encore 2012, USDF /USEF Recognized Dressage Competitions  
July 21, 2012 & July 22, 2012

## SPONSOR AND ADVERTISING REQUEST FORM

### Gold Show Sponsor \$1,000

*Includes:* Premium Banner space. Full-page color ad in the show program. Full page ad for six months in the NODA Newsletter. Announcements at the show grounds. Appreciation notice on NODA's Facebook page. Premium placement on the Newsletter sponsors appreciation page in the August Newsletter and website. Premium listing on Program Sponsor page. Premium listing as a Gold sponsor in the NODA Newsletter and on the website for six months. Six-month link to your website from the NODA website ([www.nodarider.org](http://www.nodarider.org)). Two banquet tickets to the November NODA Celebration.

### Silver Show Sponsor \$500

*Includes:* Banner space. Half page ad in show program. Half page ad for six months in NODA Newsletter. Six-month link to your website on NODA website ([www.nodarider.org](http://www.nodarider.org)). Premium listing on Program Sponsor page. Show announcements. Newsletter sponsor Appreciation. Two banquet tickets to the November NODA Celebration.

### Weekend Ring Sponsor \$300

*Includes:* Banner space. Half page ad in show program. Sponsorship announcement during shows. Listing on the Program Sponsor page. Half page ad in August NODA Newsletter.

### Daily Ring Sponsor \$150

*Includes:* Banner space. Quarter page ad in show program. sponsorship announcement during shows. Listing on the Program Sponsor page. Quarter page ad in August NODA Newsletter.

### Class Sponsor \$25 per class

*Includes:* Sponsorship announcement during show. Listing in the program on the score sheets. Listing in the NODA Newsletter, class and sponsor only. Classes are sponsored on a first-come, first-served basis.

## SHOW PROGRAM ADVERTISING

Includes a black and white ad in the Show Program and the same ad run in the September issues of the NODA Newsletter.

I would like to advertise in the Dressage 2012 & Dressage Encore Show Program:

Full page ad (7.5" x 10") \$250

Half page ad (7.5" x 5") \$150

Add a Class Sponsorship for \$15/Class to any of the above Ads

Quarter page ad (3.75" x 5") \$75

Business Card ad (3" x 2") \$35

## CLASS SPONSORSHIP

Please select your class sponsorship(s) from the list below (For multiple persons selecting a class, earliest received has priority)

I specifically want class: \_\_\_\_\_ Second choice: \_\_\_\_\_ No Class Preference \_\_\_\_\_

<input type="checkbox"/> Training Open	<input type="checkbox"/> First AA/Jr	<input type="checkbox"/> Third Open	<input type="checkbox"/> Intermediare 1
<input type="checkbox"/> Training AA/Jr	<input type="checkbox"/> Second Open	<input type="checkbox"/> Fourth Open	<input type="checkbox"/> Freestyle Class
<input type="checkbox"/> First Open	<input type="checkbox"/> Second AA/Jr	<input type="checkbox"/> Prix St. George	<input type="checkbox"/> Qualifying test any level

If you would like your sponsorship to be in honor of a person, horse, or organization, please include the information here. **Print legibly** and state the exact words you wish to have printed: \_\_\_\_\_

\*\*\*\*\*

**All forms, ads & payments must be received by June 15, 2012 (NO EXCEPTIONS).** Payments not received will prohibit your ad from the Program. Any questions or problems that may occur to create a delay-- please call 330-618-5838

Name(Print Legibly) \_\_\_\_\_

Company: \_\_\_\_\_ Contact Name: \_\_\_\_\_

Address: \_\_\_\_\_ City: \_\_\_\_\_ State: \_\_\_\_\_ Zip: \_\_\_\_\_

Phone: ( ) \_\_\_\_\_ Fax: ( ) \_\_\_\_\_ Email: \_\_\_\_\_ Website: \_\_\_\_\_

Gold Show Sponsor (\$1,000)	\$ _____
Silver Show Sponsor (\$500)	\$ _____
Weekend Ring Sponsor (\$300)	\$ _____
Daily Ring Sponsor (\$150)	\$ _____
Class Sponsor (\$25/class)	\$ _____
Full Page Ad (\$250)	\$ _____
Half Page Ad (\$150)	\$ _____
Quarter Page Ad (\$75)	\$ _____
Business Card Ad (\$35)	\$ _____
(* Add (\$15) to any Ad to sponsor a Class	\$ _____
Total	\$ _____

Submit ads electronically in a PDF format by email to [mosie-editor@nodarider.org](mailto:mosie-editor@nodarider.org) in a copy and drop condition. Ads will not be edited by NODA and must conform to the sizes specified above. You will receive confirmation that your electronic ad is suitable for printing or if any problems occur with the electronic submission. Send payment, this form and a hard copy of your ad via snail-mail, to Kathy Kirchner at the address below. No ads will be submitted for printing until the funds are received

Please make checks for sponsorship and advertising payable to: Northern Ohio Dressage Association

mail to: **NODA Recognized Competition**

**Kathy Kirchner, 900-6 Hampton Circle, Aurora, OH 44202**

# BACK BY POPULAR DEMAND

## 2012 USDF SHOW PROGRAM COVER & T-SHIRT ART CONTEST

Once again, NODA's Board and Recognized Show Committee would like to invite all our artistically talented members to submit a design for Dressage 2012 and 2012 Encore, our annual USDF recognized shows, to be used on the cover of the show program and on the volunteer T-shirts. In addition to the honor of having your design on the 2012 program and T-shirts, the winner will receive their 2013 NODA membership for free.

### The Rules:

- All entries **must be received by May 1, 2012.**
- Members may enter as many designs as they wish—no limit.
- Entries can be submitted on poster board or on plain white paper no larger than 8 ½ X 11 inches.
- All drawings must be in black and white with lines as dark as possible (the printer recommends using a sharpie or thick black pen) in order for the art to be scanned for screen printing on t-shirts.
- Design must contain "Dressage 2012" in the design (or designate space at the top or bottom for "Dressage 2012" using font and type size from last year's shirts)
- Be sure to include your contact information-name, address, phone, e-mail, etc. so we can notify you.
- The Board and show committee will select the winner—all decisions final.
- Non-winning entries will be returned by request.

So all you artists, get your creative juices flowing and mail your entries to:

Karen Eisenhauer  
201 Concord Lane  
Hinckley, OH 44233

Questions? Contact Karen at:  
[rs-vol-coord@nodarider.org](mailto:rs-vol-coord@nodarider.org)  
330-220-4705

## ***A Call to Action: Southeastern Tornadoes - Donate Now to the USEF Equine Disaster Relief Fund***

The duo of tornadic storms that devastated the southeast United States last week left a wake of splintered wood, shattered glass, downed power lines, despair and shock for the residents of towns like West Liberty, Kentucky and Harrisburg, Illinois to clean up and recover from. As if that weren't enough, one of the region's heaviest snowfalls of the year came down on Sunday night and further hindered an already difficult recovery process. For some effected residents the physical and monetary burdens of recovery are intensified by the need to care for their horse or horses. It is in times like these that the United States Equestrian Federation (USEF) calls on you to aid them by donating to the USEF Equine Disaster Relief Fund.

With the support of USEF CEO John Long we ask that equestrians, equestrian fans, and all people who share a love for horses make a donation to the USEF Equine Disaster Relief Fund. These recent storms have struck the heart of horse country and have made the cost of relocating, feeding, and caring for horses overwhelming. With your help we can do our part to make sure horses are not overlooked, forgotten, or abandoned and help to relieve the burden of effected horse owners and caretakers in this and in future times of crisis. To most effectively deliver aid this fund was established with the goal of getting horses the help they need, when they need it. "It is important to understand this fund is a dollar in and a dollar out," adds John Long, "nothing is withheld." Any donation to the USEF Equine Disaster Relief Fund equates to timely and efficient help for horses and horse owners.

Having originated during the aftermath of Hurricanes Rita and Katrina the USEF Equine Disaster Relief Fund was formed to help ensure the safety and wellbeing of horses during trying times. Money donated to the USEF Equine Disaster Relief Fund is used to prepare for disasters and assists equids of any breed who are victims of disasters including but not restricted to hurricanes, tornadoes, floods, blizzards and fires. Money donated to the fund is held by the USEF in an account restricted for this purpose. Money from the fund can only be disbursed upon the authorization of the USEF Chief Executive Officer.

**Donations may be made online** at [www.usef.org](http://www.usef.org) by going to  
[https://www.usef.org/\\_AUAIFrames/DisasterRelief/DisasterRelief.aspx](https://www.usef.org/_AUAIFrames/DisasterRelief/DisasterRelief.aspx).

**If you wish to contribute by check**, please make it out to the USEF Equine Disaster Relief Fund and mail it to:  
The United States Equestrian Federation  
4047 Iron Works Parkway  
Lexington, KY 40511.

### Shadow Facs Farm



Dressage - Combined Training  
[www.shadowfacsfarm.com](http://www.shadowfacsfarm.com)

**Wishing all competitors  
A rewarding season!**

Training - Sales - Instruction  
814.796.6161

### ***Photographs and Helmets***

**Mounted riders generally  
must be wearing  
a helmet in order to be  
pictured in the  
NODA newsletter.**

**Exception:  
Competitors may be pictured in  
head wear approved by the FEI or  
USDF; or for schooling  
competitions, clinics, pleasure  
rides; according to NODA  
Schooling Show guidelines.**



## Perfect World Dressage Free Gold Membership Offer

All USDF members can now join

PerfectWorldDressage.com for one year for free (\$15.00 value)

Perfect World Dressage is a new website which allows riders to submit their videotaped dressage tests and “problem” focused videos for scoring and training assistance by USEF licensed Dressage judges. PWD is the new place for dressage enthusiasts to connect, learn and train online. Log on to [www.perfectworlddressage.com](http://www.perfectworlddressage.com) for more information about our website.

With your free Gold Membership on Perfect World Dressage you will receive:

- A member profile page to display 10 personal videos and 100 photographs to the world wide dressage community
- The ability to take part in the USDF/Perfect World Dressage Challenge Program
- The ability to post and share your own blog
- The ability to place unlimited dressage classified ads postings
- A new place for you to connect with other dressage lovers and potential customers

To register: go to [www.perfectworlddressage.com/registration.php](http://www.perfectworlddressage.com/registration.php)

Fill out registration form information and choose the “Gold” membership option. You will need to provide your current USDF member ID number and enter the promotional code: USDF/PW2012

***What Could You and Your Horse Achieve in a Perfect World?***



## The A,B,C's (and D's) of Dressage Show Entries (or How To Make Life Easy for the Secretary!)

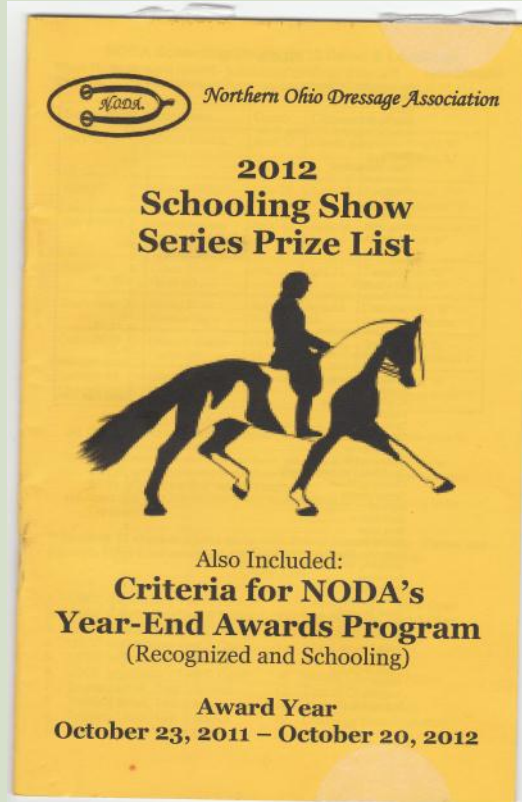
by Taya Workum-Byers

**I**t's that time again. Time to dust off your show boots, clean up your tack, start washing the winters-worth of dirt out of your horse, and time to start thinking about show season. And that means paperwork... Filling out dressage show entry forms isn't rocket science, but it does take some planning on your part, so here's some information to help you (and the show Secretary!).

### **A** is for...Ask Questions!

If you don't understand something on the entry form, call or email NODA's Schooling Show secretary and ask. The show secretary can be your best friend, or seem like your worst enemy. She would much prefer to be your friend! If you don't understand the difference between Novice and Open divisions, or whether or not you can enter a particular class, call or email.

**B** is for...Be Understanding! Remember that although we are happy to consider scheduling requests, sometimes it is just not possible to accommodate everyone. All Intro Level tests and Novice Training Level Tests 1 and 2 are ridden in the small ring. These classes will ALWAYS go first. We attempt to schedule with an appropriate amount of time between your rides, but occasionally, circumstances may cause there to be a longer wait. For instance, if you request Novice Training Test 1 and Open Training Test 1, you will likely have a bit of a wait for your second test due to the remaining Novice tests and the ring change. Also, please understand that every attempt is made to get each rider in front of both judges. This is not always



**Read your NODA Schooling Show Series Prize List from cover to cover and ask questions if you don't understand something. Happy Showing!**

possible. The change from four tests per level down to three has made it even more difficult.

### **C** is for...Completely Fill Out The Form!

Every line on the form is there for a reason. Missing even one line can be the difference between having your entry go smoothly and your entry not even being accepted. Very important is your name, address, phone number and email which all make it possible for the secretary to contact you if necessary. Your horse's name is important so we know what horse to be looking for and it helps us keep track of year-end information. If you have sent your coggins in for a NODA Schooling Show and you know it is not expired, then you can circle the "Previously Sent". If it has expired from last year, please include a copy of the new one. Just because you sent your coggins in for a different show at the same facility

doesn't ensure that NODA has a copy. Always err on the side of caution. When in doubt, send it again. Please make certain that the name of your horse on your entry matches the name of your horse on your coggins. If you call your horse "Sir Tripsalot", but the coggins has his registered name, "Grace Incarnate", you have to use the name on the coggins on your entry. If you have just had the coggins pulled and do not have the certificate, please note that on your entry- and be certain to bring a copy with you on show day. You will not be permitted to ride unless the Secretary has a COPY of your current coggins. Also, be certain all of the signatures are on the entry before you mail it. This includes a signature from the owner (if it is not the rider) and a parent/guardian of a junior rider. Finally, enclose your payment with your entry. Entries that are not accompanied by full payment

(check, cash, NODA bucks) will NOT be scheduled.

**D** is for... **Don't Wait Until The Last Minute!**  
NODA Schooling shows are very popular, and there are only so many minutes in the day. Scheduling is very tight and we often have to turn entries away. Just making sure your entry is postmarked by the closing date may not be good enough. Plan now and be prepared to mail your entry as soon as possible after the opening date of the show to help ensure that you will get in to the show.

**The purpose behind the schooling shows is to practice for recognized shows-** without spending a lot of money. Keep in mind that the entry process, including filling out all of the paper work, with your i's dotted and your t's crossed, parallels what you would do for a recognized show - so consider filling out the forms practice too! When you fill out the forms properly it's one less thing to worry about on show day so you can concentrate on you, your horse, and enjoying your ride.

### **Schooling Show Prize List Rule 8 Clarification**

Currently, page 7, rule 8, and Championship Rule page 13, rule 8, say riders must be in different divisions and horse must be in consecutive levels which makes it sound like the horse cannot be ridden in the SAME level.

The Board clarified rule 8 as follows:  
**Rule 8 page 7, and Rule 8 page 13 are amended to say: Horses may compete with multiple riders in the same or consecutive levels only. (Riders must enter different classes or be in different divisions.)**

As an example: " Horse can show and qualify with rider A in Intro Novice Junior AND with rider B in Intro Open Amateur."

**\$\$\$ EARN CASH \$\$\$**

**The Schooling Show Committee**  
is seeking  
**two organized members**  
to manage the  
**NODA Schooling Show Series**  
in 2013

**Schooling Show Secretary**  
**Schooling Show Chair/Manager**

Great management opportunities!

Shadow the current committee members to see what's involved in managing the high quality NODA Schooling Show Program.

**Office Fees Shared by Both Positions!**

FIND OUT MORE. please contact  
[schoolingshow@nodarider.org](mailto:schoolingshow@nodarider.org)

**\$\$\$ EARN CASH \$\$\$**

**Congratulations!**

Linda Cooley  
and  
KnightHawke

The Friesian Sport Horse Registry  
<http://www.fshr.us/>

has recognized

Linda Cooley & KnightHawke  
as the  
**2011 Second Level**  
**Open Competition Champions**  
(unrecognized shows)  
on an average score of 63.819%.

The Paddock Group LLC & The Paddock Saddlery announce their relocation to



The Gallery  
516 East Washington St.  
Chagrin Falls, OH 44022  
440.543.0631 / 800.253.7970



A fusion of The Paddock Group's consulting services for equine businesses and the equestrian trade with The Paddock Saddlery, offering specialty products and custom services. We have decades of experience in measuring custom made boots by Dehner and E. Vogel plus boots by Koenig and Cavallo, custom horse clothing and show curtains by Integrity Linens, plus both stock and semi-custom hunt and dressage coats by Grand Prix.

Not sure if an issue is related to the bit, the saddle, you or something else altogether? Know what you want to do with your horse, but not sure how to get from point A to B? Private client consultation services are available. Saddle fit evaluations and flocking services done without brand bias. We represent both Amerigo and Freedom Holistic saddle makers.

Talk to the experts for:

- Repairs, including boot zippers installation
- Herm. Sprenger bit test program
- Equine wellness and therapy products from Back on Track & Emerald Health

Specialty products and custom services for the discerning Equestrian, carrying only good goods! We are available 7 days a week by appointment plus Tuesday through Saturday from 12 - 6 PM. Hours may be altered due to travel schedule. "Like us on Facebook" or call ahead at 440-543-0631 to confirm. Fittings appointments preferred.

Contact us for a conversation about your equine business or private consulting needs at 440-893-9292. Weekday shipping services by UPS or USPS.

## **Meet Dee Liebenthal; NODA's President, Horse Lover and Dedicated Dressage Enthusiast**

**By Mosie Welch**

**M**ost of us know Dee Liebenthal as the current President of NODA; you at least see her monthly letter in the NODA News even if you aren't acquainted with her. She's also the woman with the camera around her neck taking many of the photos that show up on the NODA website or in the newsletter, and the woman helping out at every NODA function and most shows. She presides over the monthly board meetings in a fair and thoughtful manner, and her inbox must be inundated because she is copied on just about every NODA email. Dee has been actively involved in NODA since 1999. So, one assumes this woman who is so active and passionate in her efforts to keep dressage education and competition alive and well in Northeast Ohio has been involved in horses since she was wearing pigtails on her pony. Not so! Dee did not ride in her youth; she didn't begin her lessons until she was in her 50s! But she is sure "that some people have a horse gene" and that she is one of them. "Even though I didn't have an opportunity to do a lot with my own riding until late in life, horses have always been in my life and in my heart."

Busy with work and family, Dee didn't even have a horse in her immediate family until her older daughter was 12. She recalls, "Our family's first horse was a \$400 Appaloosa. Once that first horse was in our family, I haven't been without them in my life in some way. But, the most rewarding time for me has been the last 12 years," because as Dee points out, "It is my turn to learn and have a horse of my very own." Even though Dee didn't ride in her youth, she was



**Dee Liebenthal with her schoolmaster Rens in March 2012**

influenced from a very early age, starting with her "mother's three brothers who always had and showed horses. Mom's oldest brother didn't stop riding until he was in his 80s." And that is the kind of role model and determination Dee brought with her to the saddle when she started riding seriously in her 50s.

Getting to ride seriously, Dee shares, meant riding lessons at Rivendel Farms in Garrettsville where Dale Lappert and Bonnie Gray "were extremely helpful over nine years in giving me a good understanding of dressage and its principals, and also the confidence I needed" to ride and navigate this very difficult sport. It was during her time riding at Rivendel that Dee was tapped or, as she describes it, "dragged...kicking and screaming" by Dale into active participation in NODA. In 2000 she was elected NODA Treasurer and Dee has "been completely involved with NODA ever since." Dale and Bonnie passed on "their passion for dressage discipline" to Dee. She went to her first horse show,

showing Intro and Training levels, and with their support "did well during that time." Showing with her barn-mate Alice Brightup, Dee recalls them both happily coming home from a show with ribbons, Dee winning her first ribbon at Intro level and feeling "very happy with my success."

And she learned a few other lessons along the way. For instance, choosing an equestrian discipline was a learning experience. Not really knowing what discipline she wanted to ride, Dee's first six months were spent taking jumping



**Dee and her camera at the 2011 NODA Banquet**

lessons. Finding it was a little “scary” for a self-described “mature adult amateur” looking to begin an equestrian sport, she was grateful when Dale Lappert steered her to dressage lessons. Dee remembers that she “loved the beauty” of dressage. Then there’s the first horse. Dee recalls her as “beautiful, a nice size, and... wonderful breeding,” but



Dee’s partnership with Rens includes her Trainer Janeen Langowski-Grava

she was also an abused three year old Arabian mare. Having purchased the mare because she felt she could get the horse out of its current bad situation, Dee shares, “The biggest lesson I learned was that you shouldn’t buy a horse because you feel sorry for it...especially if you can only own one horse and you want to ride that horse.” So Dee, like many adult amateurs, ended up with a horse that was too much for her AA skill level, ended up in the dirt a little too often, and had to make the decision to move on. Dee

had “always had very young and/or just broke horses.” She loved every single one but she also struggled once she and a horse got through Intro and Training level dressage and finally arrived at First level. First level became a barrier, one Dee wanted to overcome, so she decided to “spend a couple of extra bucks” and get a horse with more training. And that’s

how she found her schoolmaster, Rens.

It was just after Dee sold her Draft/TB cross and was between horses that she took a few lessons with Janeen Langowski- Grava and decided she liked what she describes as Janeen’s “firm persistence.” It didn’t hurt that Janeen had moved her business, Topline Stables, to the Equestrian Center at Walden in Aurora just a mile from Dee’s home. Dee decided Janeen could help her find the right horse, so in 2010, after

# Topline Stables At Walden



1109 Aurora-Hudson Rd. - Aurora - Ohio- 44202  
330-995-0039 Office 440-666-6182 Cell



**BOARDING - LESSONS - CLINICS - SALES - TRAINING**

**"Excellence In Horse Care & A Friendly Atmosphere"**

### *Amenities Include*

Full-Care Board and Training Facility, Indoor & Outdoor Arena, Grass Pastures, Daily Turnout,

Stalls Cleaned Daily, Three Feedings Daily & MUCH MORE!!

**Owner/Trainer: Janeen Langowski-Grava**

- ◆ USDF Bronze & Silver Medalist
- ◆ Member of NODA, USDF, & USEF
- ◆ Active Participant in Clinics & Horse Shows
- ◆ Lesson horses/school masters available



**www.topline-stables.com    janeengrava@earthlink.net**

Dee had lined up some horses that fit her criteria, she and Janeen hit the road for a long weekend of horse shopping. Dee describes that weekend as “a



**Dee and Rens, March 2012**

memorable trip full of anticipation, disappointment, excitement, and new friends, but most of all, the opportunity to own my dream horse.” After a disappointing first day looking at the prospects that had been lined up, Janeen made a few calls to people she knew to see what might be within driving distance. On a visit to Scott Hassler to meet Davidoff Hit (Janeen’s youngster’s sire), Scott gave them a recommendation regarding a nice horse in Maryland. So the next day they hit the road again. They tried another horse along the way, but the horse was too sensitive and not what Dee was seeking. Horse shopping is never easy and by the time they headed for their last stop, Dee was a little down – finding a dream horse is not so easy. Finally they arrived at Linda Santomena’s Blue Waters Farm in Chesapeake City, MD to see a horse that was over Dee’s budget. It was cold and damp and they were running a little late, but the horse’s owner, Emily Covington who rode young horses at Blue Waters Farm and her horse were waiting for Dee and Janeen in the spring chill. Dee watched Emily ride and then watched Janeen take the horse through his paces. Dee remembers that she was still a bit skeptical when finally it was her turn to ride, but as she mounted, Janeen spoke to her very quietly and said, “You are going to love him.” And Dee recalls, “She wasn’t wrong, I liked him a lot.” And so, in May of 2010, Dee brought home Rens, a 12 year old, 16.1hh bay Dutch Warmblood gelding by Havidoff out of Lewn. Rens, who was imported to the U.S. when he was two had been owned by Emily Covington ever since. Dee describes Rens as “the best horse she has ever owned...patient with me and my less-than-perfect

aids.” Dee is thrilled that he is a people lover who never has his butt to the stall door, and that he can spot his favorite treat, a banana, well down the aisle. But the one thing that makes Dee most happy? We all know that horse shoppers never really know what they’re getting until the horse is home for a while, but Dee happily shares that “Rens, except for his level of training, is exactly the same today as he was the first time we tried him. No surprises.”

Under Janeen’s training Rens has become a solid Third level horse and just competed successfully at Fourth Level at the 2012 March Winter Dressage at Lake Erie college with Janeen up. Janeen schools Rens two or three days a week and Dee takes two lessons a week on Rens and schools him another ride or two each week. Dee says the partnership she has with Rens definitely “includes Janeen” and that Rens, along with Janeen’s guidance and patient instruction, has taught her a great deal. Having a patient and honest schoolmaster like Rens, Dee has had



**Dee at the 2011 NODA Schooling Show Championships in November 2011 with coffee, camera and papers**

the good fortune to learn what correct feels like, has experienced lightness, is learning how to keep Rens straight and between the aids, and says she is building “on that feeling to become a more consistent rider.” He is helping her develop an independent seat and aids, and most of all, Dee is learning how to be relaxed and ride consistently. Considering all her experiences, Dee encourages other adult amateurs to “consider buying or leasing a schoolmaster and always try to work with a professional on a regular basis, or as often as you can” no matter what your riding goals are. Right now Dee does not have showing as a goal, but wants to learn to ride correctly. She is working toward riding a Third level test on Rens in the next 12 to 18 months and it doesn’t need to be in the show ring. She is leaving the showing to Janeen and is very happy to do so.

Meanwhile Dee humbly calls her 13 active years in NODA “a drop in the bucket” compared to the 40 years that NODA has been in existence, and reminds me that “some of the current board members were among those that started the organization.” In her tenure as NODA’s president Dee understands that “not everyone is going to agree...the organization is full of wonderful people who have a lot to give, have great ideas, and really want to see NODA do well.” Dee’s goal is to bring those people together and move forward with an eye to making the organization the best it can be. Dee is most concerned with keeping the professionals in NE Ohio active in NODA. She relates, “We do well with our AAs, but not so well with our pros...NODA needs all our professionals because they educate and encourage their students to be involved” in schooling shows, recognized shows, clinics, and other educational events. Dee would love to work with local professionals and farm owners to develop partnerships that would benefit dressage and equestrian sports in NE Ohio, and is eager to chat with anyone who has ideas about getting this particular ball rolling. She tries to be all-inclusive in her approach and stresses that when it comes to NODA and dressage it’s the young and new members “as well as the seasoned members (who) are so important to the future of dressage in this area.” Dee reminds members that really, “It is their organization and they have the power to make it what they would like it to be by getting involved.”

Right now, Dee is literally “consumed” with NODA, making a difference by managing NODA with respect for its past and tradition but with an eye to the future. When her tenure is up she plans to continue riding and learning with her beloved schoolmaster Rens, while Janeen continues his training. The plan is to take Rens as far up the levels of dressage as possible. She will continue to volunteer in her community, perhaps therapeutic riding where she once volunteered her time. And maybe then Dee will take time for her other passion - reading. Dee describes her ideal, perhaps in anticipation of life after NODA: “I guess if I had a horse, a good book, a glass of cabernet, and the sun was shining, I would be sure I was in heaven.” Notice that Dee mentions the horse first.

# RIVENDEL FARM

**DRESSAGE INSTRUCTION  
BOARDING - TRAINING**

INDOOR & OUTDOOR RINGS - CROSS COUNTRY COURSE  
QUALITY CARE - TURN OUT

Dale Lappert "R" Dressage Judge	Garrettsville, OH 330-527-4683	Bonnie Gray Instructor/Trainer
------------------------------------	-----------------------------------	-----------------------------------

*A favorite of European riders for 25 years, now available in the U.S. and Canada...*

## **INDRA** Horse Protection Wear

**Boots, Legwraps and Backpads**

Flexible - Breathable - Supportive - Sleek

www.hollandhorsetack.com  
216-392-3022  
*Imported from Holland*




**Bob Weston**

*Boarding ♦ Training ♦ Dressage ♦ Eventing*

16490 Munn Road ♦ Chagrin falls, Ohio 44023  
Phone (440) 543-5698 ♦ Cell (440) 829-8165  
E-Mail Remington75@windstream.net  
www.TheCrossWindsFarm.com



## NODA and LEC Host the Nutrena, USDF Region 2

### Adult Clinic with Clinician Lilo Fore

June 30 and July 1, 2012

Lake Erie College Equestrian Center

Get a sneak peek of Lilo Fore's teaching style on e-TRAK  
at [www.usdf.org/etrack](http://www.usdf.org/etrack)

#### Cost to Participate

**Riders**  
Two day clinic, \$250

#### Auditors

**USDF Members**  
\$40/day or \$70/two days

**Non-members**  
\$45/day or \$80/two days

**Auditor applications**  
available after April 1.

Rider applications will be accepted by USDF  
now thru April 27, 2012.

Application forms are available on the USDF website at  
[www.usdf.org/education/clinics/adult/index.asp](http://www.usdf.org/education/clinics/adult/index.asp)

#### EARN NODA BUCKS

#### VOLUNTEERS ARE NEEDED

please contact Berni ASAP to secure your spot!

Berni Moauro is the NODA local organizer for the Lilo Fore Clinic

Please contact Berni with any questions at

[berni-edu@nodarider.org](mailto:berni-edu@nodarider.org)



**BUCKEYE**  
VETERINARY SERVICE

440-834-8821

[www.buckeyevet.org](http://www.buckeyevet.org)

#### Introducing Our New Sport Horse Treatment Modalities

##### \*State of the Art Focal Shock Wave Therapy\*

Tendon/ligament/muscle injuries

##### \*PRP\*

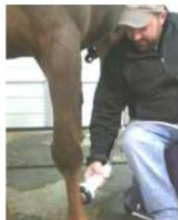
Platelet Rich Plasma: Treatment for tendon/ligament damage

##### \*IRAP\*

Interleukin Receptor Antagonist Protein: Series of injections for arthritis/joint inflammation

##### \*Mesotherapy\*

Back/muscle soreness-break the pain cycle



#### Additional Equine Services:

##### • SPORT HORSE MEDICINE:

Prepurchase Exams, Extensive Lameness Exams  
- experienced with diagnostic blocking and joint injections

##### • DIAGNOSTICS:

Gastroscopy-for diagnosing stomach ulcers, Digital Radiography/  
Ultrasound, Endoscopy-for diagnosing upper airway abnormalities,  
Fully Equipped Laboratory-for blood work and PRP/IRAP  
preparation

##### • PREVENTATIVE MEDICINE:

Wellness Programs, Advanced Dentistry Services Including Power  
Dental Flotation/Equilibrium, Vaccinations,  
Deworming/Fecal Flotation

##### • REPRODUCTION:

Embryo Transfer, Neonatal Care,  
Mare and Stallion Breeding Soundness Evaluation,  
Artificial Insemination (Fresh Cooled and Frozen)

16295 Claridon-Troy Rd,  
Burton Oh 44021

## WOODWIND FARM

Specializing in exceptional horse care, this  
equine-friendly facility offers boarding,  
lay-ups, training & lessons.

12-acre riding field, 200' x 70' indoor  
mirrored arena, all-weather outdoor  
arena, grass pastures & all-weather  
paddocks, 7-day turn out & stall  
cleaning, quality hay/grain/shavings,  
24-hour supervision, customized care.

10810 Music Street, Newbury, Ohio 44065  
Chuck Kinney: 440-564-9399 / 440-773-3216 (c)

[www.woodwindfarmjumps.com](http://www.woodwindfarmjumps.com)





# **2012 USDF REGION 2 LOCAL CIRCUITS YEAR END AWARDS PROGRAM**

## **1. PURPOSE, REGIONAL AND LOCAL LEVEL:**

- To help provide funds for Region 2 sponsored GMO Educational programs.
- To provide a standard set of classes throughout the region that will count toward Region 2 Local Circuits Year End Awards.
- To encourage local competitions managers to put together a series of schooling dressage competitions that will provide competitors with a standard quality of classes and judges.
- To allow local competitor's scores to compete on a regional level without leaving their home circuit.
- To encourage the competitor to improve their skills, gain show experience and confidence to move up to USDF/USAE rated shows.
- To provide a venue to educate and train a base of show volunteers: scribes, gatekeepers, scorers, bit checkers; etc for local and the USDF/USEF recognized shows.
- To encourage local competition managers to provide a series of dressage competitions that will coordinate dates, judges, and have a standard set of classes which may be used toward Region 2 Local Circuit Year End Awards.
- To encourage riders to join a local GMO (Group Member Organization of the USDF).

## **2. HORSE/RIDER ELIGIBILITY REQUIREMENTS**

- Competitor must be a current or new member of a local GMO to compete for Region 2 Local Circuit Year End Awards.
- Competitor is responsible for following the rules and completing the requirements of the local shows.
- If competing in Musical Freestyle, competitor must send to Points Person a copy of a score of 60% or above of the highest test in the level they wish to compete.
- Competitor may compete in two adjacent levels on the same horse.
- Competitor may show more than one horse. EACH horse/rider combination MUST complete the registration form and send to the Region 2 Points Person.
- A horse may be shown by up to two competitors. EACH horse/rider combination MUST complete the registration form and send to the Region 2 Points Person.
- Competitor must send a **COMPLETED** REGION 2 LOCAL CIRCUIT REGISTRATION FORM 2012 for *each* horse/rider combination to the Region 2 CIRCUIT POINTS PERSON with a check for \$25.00 for each LEVEL or TWO LEVELS for \$45.00, before they are eligible to receive points.
- Rider MUST fill out a REGION 2 YEAR END HIGH POINT AWARDS SHOW FORM for each competition.
- Rider must include a readable front copy of each test to be used for year-end awards.
- To qualify for YEAR END AWARDS a minimum of FOUR test scores per level are needed.
- Horse/rider combinations that have shown at USDF/USEF recognized competitions Second Level & above

## **2012 USDF REGION 2 LOCAL CIRCUITS YEAR END AWARDS PROGRAM**

### **3. CLASS ELIGIBILITY**

STANDARD SET OF CLASSES:

USDF Intro A , B, & C  
TRAINING LEVEL Tests 1-3  
FIRST LEVEL Tests 1-3  
SECOND LEVEL and above ( State Tests)  
DRESSAGE HORSE IN HAND (3 YRS AND UNDER)  
DRESSAGE HORSE IN HAND (4 YRS AND OVER)  
MUSICAL FREESTYLES (State Level)

Musical Rides include Freestyles, Pas de Deux, Quadrilles. (Musical rides may be divided, if warrant).

Any Restrictive classes are NOT eligible for Region 2 Local Circuit Year End Awards.

Competition managers may provide Junior (20 & under), Senior (21 & over), Open, and A/A Divisions if the entries warrant. Points will follow the competitor in Open or combined classes.

Dressage Horse in Hand is OPEN to all horses to be shown individually on the Triangle in the appropriate headstall (Weanlings and Yearlings are shown in a halter. Two year olds and up are shown in a bridle). \*The competition managers reserve the right to accept/decline an entry that may present an unsafe situation for competitors and horses.

USDF/USEF recognized classes are NOT eligible for this awards program.

The competitions are required to have a minimum of an L graduate Judge.

A summary of Region 2 Local Circuit Year End Awards Guidelines and a copy of the Registration form may be reprinted.

A complete Region 2 Local Circuit Year End Awards Regulations will be e-mailed upon request.

### **4. YEAR END AWARDS**

Awards will be given to the top 10 riders in each LEVEL for Junior (20 or less), Senior (21- 49), Open, Adult-Amateur and Vintage (50 years and older). Divisions based on their AVERAGED PERCENTAGE SCORE if entrants warrant. Divisions may be combined if entries warrant.

Awards will be given to the top 10 dressage horses in hand in each of the two levels (3 yrs & under and 4 yrs & over) based on their AVERAGED PERCENTAGE SCORE if entrants warrant.

A minimum of FOUR scores per LEVEL are needed to qualify for Year End Awards.

Award results will be published on the Region 2 Website and may be printed in local GMO newsletters.

Awards will be mailed to the recipient. Show year will be from November 1 to October 31.

For further information, please contact the Region 2 Awards Program contact Catherine B. Jacob, at [Cathyjacob@Juno.com](mailto:Cathyjacob@Juno.com) or (513) 738- 2746 or go to the Region 2 website at [www.usdfregion2.org/Awards](http://www.usdfregion2.org/Awards) to copy the forms necessary for application.

## *Help Wanted*

### *Sponsorship and Ads Coordinator, Recognized Show Committee*

Do you want to be involved with keeping NODA's educational programs a success?  
Are you organized, active, and looking to make a difference?  
Do you have a background in media, marketing, or networking?  
Do you have ideas on how to bring in sponsorship for NODA's programs?

NODA is seeking a person who will be instrumental in keeping NODA's educational programs successful through outreach and partnering with equestrian and community businesses resulting in program sponsorships.

*The position is supported by consultation with the outgoing coordinator.  
Comes with files and documentation of past activities.  
Will work with NODA's newsletter editor in managing electronic ads.*

For more information on the position contact  
Recognized Show Chair, Niki Sackman at [VP@nodarider.org](mailto:VP@nodarider.org) OR  
Outgoing Sponsorship Coordinator, Suzanne Carlton at [sponsor@nodarider.org](mailto:sponsor@nodarider.org)

## *The Dressage Foundation Announces a New Fund!*

### *The Elysium Farm Fund for U.S. Breeder Excellence.*

*Abbey Henderson of Elysium Farm, LLC and Astro*



The Elysium Farm Fund for U.S. Breeder Excellence at The Dressage Foundation supports attendance at educational programs related to breeding, such as a USDF Sport Horse Seminar, the American Hanoverian Society Breed Orientation Course, the Hannoveraner Verband's Breed Orientation Course, or similar educational program.

No preference is given to programs focusing on a particular breed. Preference is given to USDF members.

The maximum amount to be awarded will be \$1,000 per year

for programs held in the U.S. and up to \$5,000 per year for programs held overseas. The amount awarded will depend on the financial plan provided as part of the application.

It is required that completed applications be submitted by May 1st of each year. Additional information and application materials are available at [www.dressagefoundation.org](http://www.dressagefoundation.org).



THE DRESSAGE FOUNDATION  
1314 'O' Street, Suite 305,  
Lincoln, NE 68508  
402-434-8585  
[info@dressagefoundation.org](mailto:info@dressagefoundation.org)  
[www.dressagefoundation.org](http://www.dressagefoundation.org)

*Donations of all sizes are greatly appreciated!*

## Saddle Fit – How Does a Rider Know?

By Heather Soones-Booher

**W**hy is saddle fit so important? What are the signs of trouble, and how do you get them fixed and by whom? For many years this subject has been very much overlooked. With the advancement of technology, the days of “one saddle fits all” are all but over. What we now know is that you as the rider can have the ultimate comfort AND the best performance ever from your horse as it relates to saddle fit if you as a rider or owner maintain your saddle with the best fit for your horse’s back.

Signs that your saddle may need to be evaluated include changes in your seat and leg. You may hear comments from your instructor about your position in the saddle such as “sit back” or “keep your legs back (or forward).” Your horse may show some behavioral issues when under saddle. For example, your horse cannot or will not pick up the canter on the correct lead, or has started balking or bucking. You may notice your horse’s back is sore when being groomed. Saddle fit can and will affect both your position and your horse’s comfort in work, and ultimately your success.

What is the reason one particular saddle can feel different to a rider on different horses? This is caused by the different conformation and back shape from horse to horse. High-withered horses need to be fitted with a completely different type of saddle panel than flat mutton-withered horses.

Your horse changes shape often as the topline develops; the frequency of these changes will relate to his age, training, schooling schedule, and health management. Great attention must always be paid to the condition of the saddle’s *flocking*. Irregular,

uneven, or lumpy flocking can cause pressure points that may seriously damage your horse’s back. Severe irregularity in the flocking can cause the saddle to sit to one side. Over stuffed, the saddle will be hard and will not adapt to the horse’s back, causing pressure points, sensitivity and soreness. Also, the flocking in the saddle may clump, shift, or compress, which may result in discomfort to your horse. It is possible to re-flock your existing saddle, but only if it is wool stuffed and not a foam panel. Correct flocking provides a cushioning effect that helps to reduce trauma. It creates softness for the horse and rider, and balances the saddle on the horse’s back to help the rider’s

position.

It is important to look for signs that the saddle is impeding work during schooling so you can have your saddle checked and make any necessary adjustments, but all saddles should be checked at least *yearly*. An analogy I have used often is, when humans work out, we change! We need to change our clothing - the same is so



An example of a balanced saddle sitting correctly on the horse

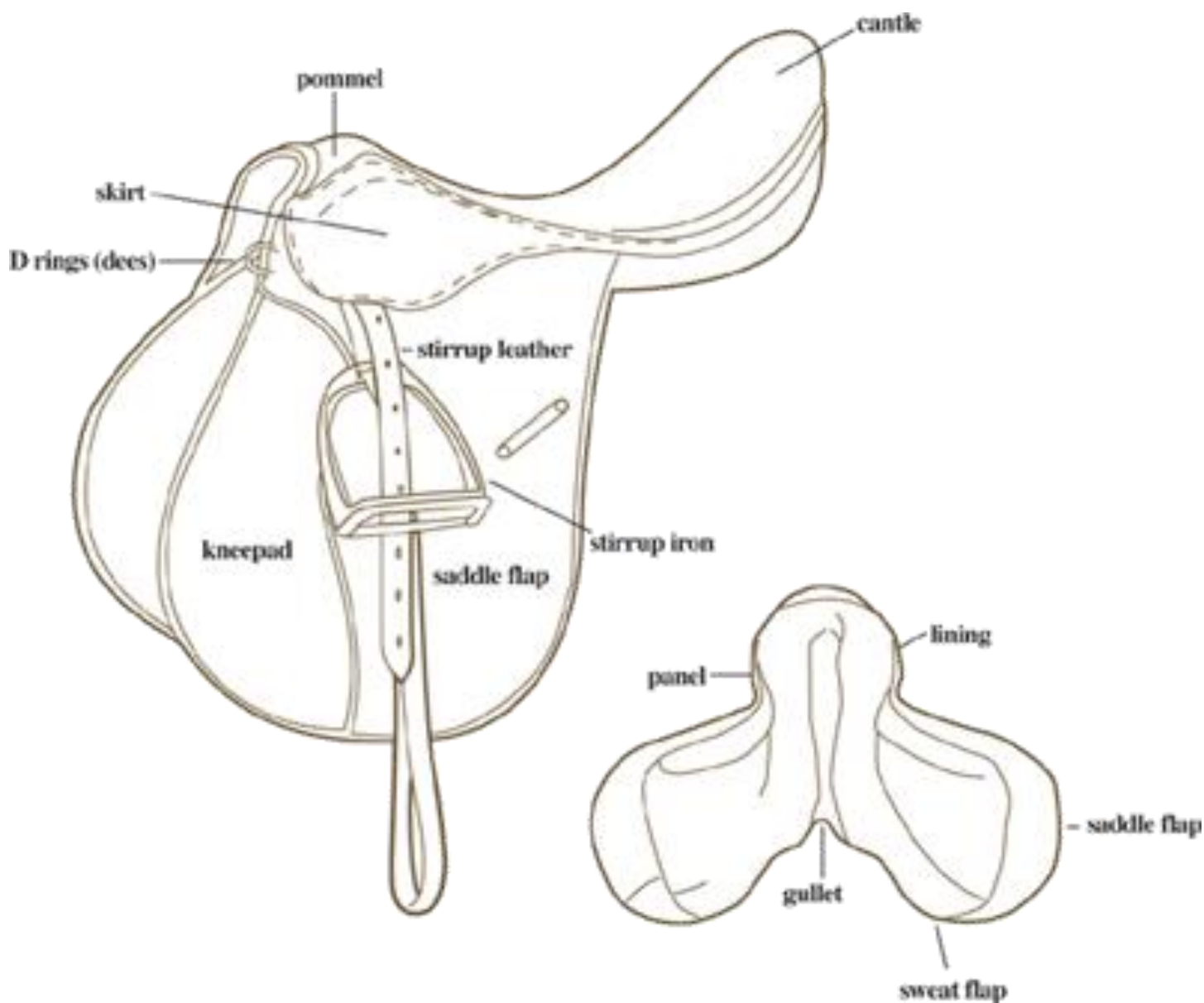
for our horse and the saddle. Once you have determined that your saddle could be a problem and you have an appointment with a saddle fitter, you should expect the appointment to take up to two hours, especially if you have not worked with the saddle fitter before. Your saddle fitter should ask you for a history of your horse’s behavior and if there have been any changes or physical issues recently. He or she should look at your current saddle before it is put on your horse’s back. Next the fitter should examine and evaluate your horse’s back independently, and finally, put the two together and evaluate the fit of the saddle on the horse’s back. Depending on what is happening during schooling and/or the complaint regarding your horse’s behavior or your seat, the saddle fitter may need to see you

ride before making any adjustments. Using all this information, the saddle fitter will recommend any changes that are necessary. Your saddle fitter should answer questions and explain what they find as it relates to your horse's back and your saddle. Once there have been adjustments made to the saddle, the saddle fitter should see you ride in the saddle again so you can evaluate what changes you may feel. This also gives the saddle fitter valuable feedback related to the adjustments made. Further adjustments might need to be made during your appointment, but these should take a minimum of time.

Another factor that helps and guides saddle fitters is time they themselves spend in the saddle. Having the opportunity to ride in all different brands of saddle

that are on the market, as well as understanding how they are constructed, makes for a well-informed saddle fitter. This can be very helpful to clients, as the saddle fitter can understand the frustrations the rider is challenged with regarding their seat or the balance and fit of the saddle on their particular horse, and how a certain saddle may affect the comfort of their horse.

This all brings to mind the question, "How do I find a good saddle fitter?" Choosing a qualified saddle fitter can be a chore, but I recommend that a rider finds a saddle fitter that rides and is a knowledgeable horse person. I also recommend finding a saddle fitter that is recognized by the Society of Master Saddlers in the UK. The saddle fitters recognized by this organization



**The parts of the saddle.**

go through rigorous training and examinations in order to be certified as Master Saddle Fitters. You can go to their website [www.mastersaddlers.co.uk](http://www.mastersaddlers.co.uk) to find a list of the Overseas Qualified Saddle fitters in



Heather on Bordeaux. Photo by Pics Of You

the United States. It is important for a saddle fitter to participate in ongoing technical training and continuing education, as these enhance the skill of the saddle fitter in evaluating the aspects of body structure, skeletal structure, biomechanics and how the movement of the horse directly and indirectly relates to the fit of the saddle. Additional training and insight can be obtained from other respected professionals in the horse industry such as veterinarians who manage your horses overall health, as well as chiropractors and massage therapists to name a few. Your saddle is important in the overall management of your horse; your saddle fitter will help you maintain it for both your horse's and your comfort and best performance.

NODA member Heather Soones-Booher has been a lifelong horsewoman. She started riding at the age of six in England and has been horse crazy ever since. She moved to the United States in 1994 and started Saddles 101, LLC in 2000 after realizing there was a need for education related to saddle fitting. Her area of work spans most of Ohio, Western PA and NY and Northern WVA. In 2006 she went to England and continued her education for saddle fitting with the Society of Master Saddlers and became certified through them. Although work and travel takes up time, Heather and her husband (and three Jack Russell terriers) run a small private barn, where she is able to continue riding and training her young horse "Bordeaux", and raise her younger Oldenburg "Loxley".



Heather on Fabian at Lake Erie College.

In 2010 Heather earned her USDF Bronze medal and is continuing her riding education.

Check out Heather's website, Saddles 101 at [www.saddles101.com](http://www.saddles101.com). Heather can be reached for comments, questions and saddle fitting by appointment at 240-431-1318.

### Articles by Equestrian Professionals

**NODA welcomes and encourages articles by professionals who support the local, regional, and national equestrian community.** The focus of all NODA's articles is the education of the horse owner, rider, trainer, competitor, and the horse enthusiast. NODA welcomes the perspective of all professionals. To share a bit of your professional knowledge with NODA through an article contact an editor. See page 3 for contact info.

CUSTOM SADDLE FITTING AND FLOCKING



**SADDLES101**

*Heather Soones-Booher*

SMS Qualified Saddle Fitter



135 Hunt Road  
Portersville, PA 16051

Heather@saddles101.com  
[www.saddles101.com](http://www.saddles101.com)

240-431-1318

BUCKEYE  
NUTRITION



SAVE  
IN 2012

Let us show you how to save money  
on your feeding program with our  
premium feeds

Diet Evaluation  
&  
Hay Testing  
Available



Contact Janice Lavrich

330.958.1826

JLavrich@BuckeyeNutrition.com



Find us on Facebook/Buckeye® Nutrition

Visit [www.BuckeyeNutrition.com](http://www.BuckeyeNutrition.com) for more information

## 2012 NODA Schooling Show Series

May 12 (SATURDAY)  
Grand Haven Stable  
Jefferson

June 23 (SATURDAY)  
Stoney Ridge Stables  
Wadsworth

July 8 (SUNDAY)  
Grand Haven Stable  
Jefferson

August 12 (SUNDAY)  
Cross Winds Farm  
Chagrin Falls

September 2 (SUNDAY)  
Rocky River Stables  
Rocky River

October 13 (SATURDAY)  
Chagrin Valley Farms  
Bainbridge

October 14 (SUNDAY)  
*Championships*

Chagrin Valley Farms  
Bainbridge

Chris Goodall, Schooling Show Chair  
schoolingshow@nodarider.org

Taya Workum-Byers, Show Secretary  
ss-secretary@nodarider.org



## BECAUSE LIFE GETS IN THE WAY OF RIDING

Log in as a GMO Member  
to get your new USDF member benefit:  
The New Online Education Opportunity -  
**e-TRAK!**

**WWW.USDF.ORG/e-TRAK**

**e-TRAK ALWAYS AVAILABLE WHEN YOU ARE!**

## 2012 Adequan/USDF Annual Convention Headed to New Orleans

**“Laissez le bon temps rouler” – Let the good times roll!**

Lexington, KY (February 28, 2012) – The United States Dressage Federation (USDF) is pleased to announce that the 2012 Adequan/USDF Annual Convention will be held in New Orleans, LA, December 5 through December 8. This year's convention will feature an array of networking and educational opportunities and will culminate with USDF's Salute Gala and Annual Awards Banquet, which highlights USDF's top volunteers and competitors.

This year's host hotel, the Sheraton New Orleans, is located right on Canal Street in the heart of the French Quarter, providing attendees access to the best that New Orleans has to offer. With Bourbon Street, Café du Monde, and Jackson Square all within walking distance, this convention location provides the perfect December getaway. So bring your family and friends and join USDF for a convention to remember!

For more information on about the Adequan/USDF Annual Convention visit  
[www.usdf.org/convention](http://www.usdf.org/convention)  
or contact the USDF office at [usdressage@usdf.org](mailto:usdressage@usdf.org).



## ***Northern Ohio Dressage Association Members Well Represented in the United States Dressage Federation Year-End Awards Program!***

Compiled by Kathy Kirchner, NODA Member Representative

From Training level to Grand Prix, NODA was well represented in the 2011 United States Dressage Federation Year-End Awards Program. We are proud of all our members who, through hard work and dedication to the sport of dressage, finished the year on such a high note. Congratulations!

### **USDF Horse of the Year**

#### ***Fourth Level***

Eighth place: Cleopatra, owned by Betsy Juliano and ridden by George Williams

#### ***Intermediate I***

Fourteenth place: Brilliant Too, ridden by Katherine Poulin

### **Adequan/USDF Adult Amateur Year-End Awards**

#### ***Prix St. Georges***

Eighth place: Marlene Knopsider, riding Algebraic Expression

### **Great American/USDF Regional Championships - Region 2**

#### ***Training Level Adult Amateur***

Reserve Champion: Idlehour McHenry, owned and ridden by Cindy Bank

Fourth place: Ghalewind, owned and ridden by Lauren Wade

#### ***First Level Freestyle***

Seventh place: Ghalewind, owned and ridden by Lauren Wade

#### ***Second Level Adult Amateur***

Third place: Ghardener, owned and ridden by Sharon Lewis

#### ***Second Level Freestyle***

Champion: Ghardener, owned and ridden by Sharon Lewis

#### ***Third Level Adult Amateur***

Fourth place: Ghardener, owned and ridden by Sharon Lewis

#### ***Third Level Junior/Young Rider***

Third place: Tizayo, owned and ridden by Cassandra Hummert-Johnson

#### ***Third Level Open***

Champion: Riccidoff, owned by Betsy Juliano and ridden by George Williams

#### ***Third Level Freestyle***

Fifth place: Tizayo, owned and ridden by Cassandra Hummert-Johnson

#### ***Fourth Level Adult Amateur***

Reserve Champion: Narok, owned and ridden by Sara Justice

Eighth place: Roebel Comando SN, owned and ridden by Laura Headley

#### ***Fourth Level Junior/Young Rider***

More Coffee Please, owned and ridden by Clara Etzel

#### ***Fourth Level Open***

Champion: Cleopatra, owned by Betsy Juliano and ridden by George Williams

#### ***Fourth Level Freestyle***

Seventh place: Ghlenlivet, owned and ridden by Nancy Lewis-Stanton

Eighth place: Wildest Dream, owned and ridden by Betsy Juliano

#### ***Junior Team***

Reserve Champion: Tizayo, owned and ridden by Cassandra Hummert-Johnson

#### ***Prix St. Georges Adult Amateur***

Algebraic Expression, owned and ridden by Marlene Knopsider

#### ***Prix St. Georges Junior/Young Rider***

Rotsporn's Crusader, owned and ridden by Jennifer Harding

#### ***Prix St. Georges Open***

Champion: Cleopatra, owned by Betsy Juliano and ridden by George Williams

#### ***Intermediate I Adult Amateur***

Champion: Algebraic Expression, owned and ridden by Marlene Knopsider

#### ***Intermediate I Open***

Reserve Champion: Ricardo, owned by Christine Thompson, ridden by Lauren Tisdal

### **Adequan/USDF All-Breeds Awards**

#### **American Hanoverian Society**

#### ***Third Level Adult Amateur***

Second place: Sharon Lewis, riding Ghardener

#### ***Training Level Junior/Young Rider***

Second place: Hope Chisar, riding Westyn

## ***Northern Ohio Dressage Association Members Well Represented in the United States Dressage Federation Year-End Awards Program!***

### ***First Level Musical Freestyle***

Third place: Ghalewind, owned and ridden by Lauren Wade

### ***Second Level Musical Freestyle***

First place: Ghardener, owned and ridden by Sharon Lewis

### ***Fourth Level Musical Freestyle***

Fourth place: Ghlenlivet, owned and ridden by Nancy Lewis-Stanton

### ***Grand Prix Musical Freestyle***

Third place: Rhavel, owned and ridden by Nancy Lewis-Stanton

### **American Warmblood Society**

#### ***Training Level Open***

Second place: Maximus, owned and ridden by Jennifer Kick

#### ***Training Level Adult Amateur***

Second place: Maxximus, owned and ridden by Jennifer Kick

### **Cleveland Bay Horse Society of North America**

#### ***First Level Open***

First place: Idlehour McHenry, owned and ridden by Cindy Bank

#### ***First Level Adult Amateur***

First place: Idlehour McHenry, owned and ridden by Cindy Bank

### **Friesian Horse Association of North America**

#### ***Third Level Musical Freestyle***

Second place: Mark Fan'e Goaijengemieden, owned and ridden by Charlotte Bayley-Schindelholz

### **Friesian Sporthorse Association**

#### ***First Level Open***

Second place: Aragorn, owned and ridden by Debra Smith

#### ***First Level Adult Amateur***

First place: Aragorn, owned and ridden by Debra Smith

### **Lipizzan Federation of America**

#### ***First Level Open***

First place: Sasha, owned and ridden by Michelle Lackey

### **Oldenburg Horse Breeders Society NA Div. GOV**

#### ***Training Level Adult Amateur***

Second place: Barbara Tuskas, riding San Andreas

#### ***USEF Four-Year-Old***

First place: Rhigatoni, owned and ridden by Nancy Lewis-Stanton

### **Performance Horse Registry**

#### ***Prix St. Georges Open***

First place: Brilliant Too, ridden by Katherine Poulin

#### ***Intermediate I Open***

First place: Brilliant Too, ridden by Katherine Poulin

#### ***Third Level Junior/Young Rider***

First place: Cassandra Hummert-Johnson, riding Tizayo

### **Swedish Warmblood Association of North America**

#### ***Intermediate 1 Open***

Second place: Narok, owned and ridden by Sara Justice

#### ***Fourth Level Adult Amateur***

Second place: Sara Justice, riding Narok

#### ***Prix St. Georges Adult Amateur***

Third place: Sara Justice, riding Narok

#### ***Intermediate I Adult Amateur***

Second place: Sara Justice, riding Narok

### **USDF Silver Medal**

Sara Justice

### **Master's Challenge Award**

Carol Brewer

### **USDF University Program Gold Diploma**

Dale Lappert

### **USDF/Dover Saddlery National Merit Winner**

Sharon Lewis

If you were a NODA member in 2011 and won a USDF Year-End award but are not included above, we are very sorry. Please let us know and we will correct our mistake. Contact Kathy Kirchner at MemberRep@nodarider.org.

# Serving Customers Proudly Since 1934



## Five Store Locations To Serve You:

<b>CORTLAND</b>	<b>312 S. Mecca Street</b>	<b>330-637-4015</b>
<b>JEFFERSON</b>	<b>161 E. Jefferson Street</b>	<b>440-576-3010</b>
<b>MIDDLEFIELD</b>	<b>16003 E. High Street</b>	<b>440-632-0271</b>
<b>MUNSON</b>	<b>12285 State Route 44</b>	<b>440-285-3143</b>
<b>RAVENNA</b>	<b>467 Cleveland Road</b>	<b>330-296-3424</b>

**Delivery Available Call 1-800-688-4565**

## Products Offered:

- ◆ Animal Feeds & Supplies
- ◆ Animal Bedding Products
- ◆ Fencing & Gates
- ◆ Gift Merchandise
- ◆ Lawn & Garden Supplies
- ◆ Pest Control Products
- ◆ Water Softener Salts
- ◆ Animal Health Supplies
- ◆ Equine Feeds & Supplies
- ◆ Farm & Home Supplies
- ◆ Ice Melting Products
- ◆ Lubricants & Grease
- ◆ Pet Feeds & Supplies
- ◆ Wild Bird Feeds & Supplies

## Services Offered:

- ◆ Personalized Customer Service
- ◆ Knowledgeable & Dependable Staff

**DUTCH CHOICE**  
**Animal Feeds**



**We Load Your Purchases Into Your Vehicle For You!**

# The First Annual Dusty Boots Derby Benefit Extravaganza to Benefit Valley Riding, Inc.

By Jeni Gaffney, DVM

**P**lan on enjoying the 138<sup>th</sup> Kentucky Derby with your friends on Saturday, May 5<sup>th</sup> at Rocky River Stables, as the Dusty Boots Derby Benefit provides an evening of festivities to benefit Valley Riding, Inc. and their therapeutic and urban outreach riding programs. The gala evening will feature the Run for the Roses on two large screen TVs in the festively decorated indoor arena at Rocky River Stables. All Derby activities will begin at 4:30 pm in the lobby of the barn where you will check in and receive a mint julep and your bid number for the various silent and live auctions that will take place throughout the event.

The first silent auction will take place between 4:30 and 5:30 pm in the lobby where you can bid to "own" the Derby horse of your choice along with the auction item paired with that horse (example: Big Brown and a lovely piece of jewelry). Sip on your mint julep as

you bid to win your favorite horse. Then you, along with the other "owners," will be escorted Derby style to the Owners Paddock for some of the best seats in the house to view the 6:00 pm Run for the Roses. Which lucky "owner" will be escorted to the Winner's Circle to receive special prizes at the First Annual Dusty Boots Derby Benefit?

Other pre- and post-race activities include a silent auction with items in all price ranges, with bidding open until 8:00 pm. Experience the fun of a live auction as a few select offerings, including an Orlando condo with tickets to Disney, a horse boarding and lesson package, and an iPad come up for bid. There will also be an opportunity to directly fund a rider for a lesson, a session, or for a whole year in the Rocky River program of your choice. After the race there will be a short presentation about Rocky River Stables and what it means to their riders, and some short



19901 Puritas Road  
Cleveland, Oh 44195  
Tel: 216-267-2525  
www.valleyriding.org



**1<sup>ST</sup> ANNUAL  
DUSTY BOOTS  
DERBY BENEFIT**

*Saturday, May 5, 2012*  
4:30 pm - 9:00 pm  
Benefiting Valley Riding Inc. including: Therapeutic  
Riding Programs, Youth Outreach Programs  
& Scholarship Funds  
Contact dustybootsbenefit@yahoo.com for information.



Rocky River Stables • 19901 Puritas Road • Cleveland, OH

**Benefit Horse Festival**

*Sunday, August 5, 2012*  
11:30 am - 4:00 pm  
Benefiting the  
Therapeutic Riding Programs

Contact valleyriding@sbcglobal.net for information.

announcements followed by dinner. Enjoy the live band "Just Us" as dinner is served buffet style from stations set up around the arena. Each reservation comes with tickets for mint juleps, beer, or wine.

The Dusty Boots Benefit will begin in the stable lobby, but the real Derby party will take place in the indoor arena. You will walk between buildings, so dress for the weather and plan to wear your dusty boots for the barn along with your fun Derby attire. Jeans or breeches paired with a colorful top or jacket will be right at home; just don't forget your Derby hat! The Parade of Hats will culminate in a prize for the most outrageous Derby hat!

All proceeds from the evening will go to benefit the programs of Valley Riding, Inc, established in 1988. Valley Riding, a 501(c)3 non-profit organization and affiliate of Cleveland Metroparks, manages and operates out of Rocky River Stables. Valley Riding employs professional and certified riding instructors to provide English riding lessons, therapeutic riding lessons, and riding opportunities for underserved populations through partnerships with Cleveland Metro parks, public schools, and urban community youth programs. Join in the fun at the First Annual Dusty Boots Benefit for Valley Riding, Inc.!

**How to reserve your tickets for the Dusty Boots Derby Benefit**

Seating is by reservation only, there will be NO tickets sold at the door.

Individual tickets are \$75 (\$50 tax deductible)

Reserve a premium table for 10 at \$1000 (\$750 tax deductible), supported by a runner.

You must RSVP by April 20 to join in the festivities.

**For more information or to purchase tickets go to [www.valleyriding.org](http://www.valleyriding.org) or call 216-267-2525**

The Dusty Boots Derby Benefit for Valley Riding, Inc will take place at  
**Rocky River Stables**  
**19901 Puritas Avenue**  
**Cleveland, Ohio 44135**



*Valley Riding Inc.*

**Rocky River Stables**  
 19901 Puritas Ave.  
 Cleveland, OH 44135

216 267 2525

*Margaret McElhany*  
 President




**Jeni Gaffney, DVM**

**Endia Peckham, DVM**

**"Visiting Vet, Inc"**

WE ARE AN EQUINE AND SMALL ANIMAL PRACTICE  
 PROVIDING

- Routine Small Animal Home Care
- Small animal surgery by appointment
- Radiology
- Digital Ultrasound
- Portable Digital Radiography
- Equine Dentistry
- Equine Lameness Evaluation, Treatment, & Maintenance
- Equine Emergency Care
- Sport Horse Maintenance

330-665-5915

look us up at  
[www.visitingvet.net](http://www.visitingvet.net)




**Equestrian Pursuits, LLC**

Equine Massage  
 by Mosie Welch

330-618-5838  
[mosie\\_welch@hotmail.com](mailto:mosie_welch@hotmail.com)  
[www.equestrianpursuits.com](http://www.equestrianpursuits.com)

**Flexible and Strong**  
**Ready to Perform**

## ***NODA Board Meeting Minutes — February 13, 2012***

**Meeting Location:** Panera Bread in Solon

**Attendance:** Robyn Ambrose, Fran Cverna, Chris Goodall, Lisa Gorretta, Dale Lappert, Dee Liebenthal, Berni Moauro, Gail Patton, Mary Dana Prescott, Niki Sackman, Patti Valencic, Mosie Welch

**Call to Order:** Dee Liebenthal, president, called the meeting to order at 7:05 PM.

**Minutes:** Fran Cverna moved to approve the minutes from the January meeting as written. Dale Lappert seconded, and minutes approved.

**Treasurer's Report:** Dee for Jennifer Kick

- Checking account \$17, 913.03
- Savings account \$5,011.79

**Membership Report:** Fran Cverna

- 134 AA, 23 Jr/Young riders, 40 Professionals. Total members = 197
- Membership cards discussed under new business. Fran and Niki Sackman will do preliminary work to make them available.

**Handbook:** Fran Cverna

- Fran has volunteered to take on handbook responsibilities with Rosemary Rufo's guidance.
- OK to do 8.5 by 5.5 inch format if print not too small.
- Discussed several items that could be dropped as they are also available on line or in other mailings/publications. They are: Benefits of Membership, Schooling Show Series pages (SS Prize List is mailed to all new members and SS entry form will be left in), year end award winners, and Dana's Doodles NODA t-shirt ad.
- Discussion about professional and industry related Directory in Handbook. Anyone listed must be a NODA member. Linda Cooley will be asked to do a broadcast emailing to see if any members have services to list.
- Fran will bring draft to next meeting.

**Recognized Shows:** Robyn Ambrose

- Robyn has ordered ribbons, hired vet on call, and lined up farrier.

- Has negotiated hotel rates in Austinburg, booked rooms for judges, and applied for BLM and AQHA sanctioning.
- Robyn has secured two judges for 2013 season and needs one more.
- Discussed pilsner glasses and other options for prizes. Robyn will bring selection to March meeting.
- Discussed total ad packages vs. piecemeal ads in the programs.
- Discussed color ad options in RS Program for big donors. Niki Sackman has researched costs. Further investigation is needed.
- Suzanne Carlton is no longer able to do the leg work for ads but is happy to help behind the scenes. Possibly a small committee could do this. Mosie Welch and Niki Sackman and Lisa Gorretta will help with the media sponsorship end of it.
- Discussed need for unified website/newsletter program with input from banquet committee.

**Education:** Bernie Moauro

1. Lilo Fore USDF Clinic
  - Bernie has met with LEC and Region 8 member who is very knowledgeable.
  - Will ask Linda Cooley to put volunteer guidelines on the website.
  - Discussed allowing volunteers who work half a day to audit the other half day for free.
2. Marcia Doyle is looking into Instructor Certification Workshop with Training/First level option to increase participation.

**Schooling Shows:** Chris Goodall

- Prize List is complete. Krista Warnick will have 100 extras printed to have at Shows and Tack shops.
- Ribbons are ordered.
- Working on photographers.
- Looking for concessions for June, August, and September.
- Applied for APHA award. Still pending.

- LEC is interested in hosting shows. NODA would consider for 2013 season if cost is in line.

**Newsletter:** Mosie Welch

- Need for agreement with printer.
- Need for a deadline for articles.
- New photograph policy to allow top hats for riders at the appropriate level, if in competition or warm up ring, disallow any photos of riders without helmets.

**External relations:** Lisa Gorretta

- Entries open for LEC March show. Online option in place. Would like to see all NODA shows have that option. Niki Sackman will check into it at horseshowoffice.com.
- Asked board to encourage teams to compete at the Team de Ville.
- A motion was made by Dale for entry fee to be \$25 for each team member, riders be required to be NODA members. Team must have NODA in their name. It was seconded by Mosie and a vote was taken. Motion passed. This will be added to the newsletter and website.
- Lisa encourages NODA members to attend the exhibitor's party following the Prix de Ville.
- Lisa reported that there are 2 spots for PM delegate at the USDF Selection in New Orleans. Nominations due 4/15/2012.
- She also reported on new partnership between USDF and Perfectworlddressage.com that judges videos of training thru second level rides from show or home for anyone interested.

**Website:** Fran for Linda Cooley

- Posted Stoney Ridge Schooling Shows and clinics, and new links to Equine Specialty Hospital and Clara Etzel dressage LLC.

**Awards Committee:** Dee for Janeen Langowski

- Fabian Award approved by email vote and has been added to program.

**New Business:**

- Mary Dana Prescott will write a letter encouraging participation in Equitation classes.
- Sally Gries and Dee are in discussions for options for Class Sponsorship in the late Gretchen Singleton's name.
- Dale would like to see Region 2 Championship promoted in newsletter.
- Future of video project - Dee will ask Dan Crudel if he would like to continue.
- Open meeting needed to explain new USDF biting rules in effect Feb 1, 2012. Lisa will conduct in late April or early May.

**Adjournment:** Patti Valencic moved to adjourn, Lisa Gorretta seconded, and motion passed. Meeting adjourned at 8:52 PM. The next meeting will be held at 7 PM on Monday, March 12, 2012 at Panera Bread in Solon.

***Grants Available  
for  
NODA MEMBER  
Equine Professionals***

A fund to support the professionals trainer or instructors continuing education .

**50% Cost of Event Reimbursable**

Up to \$200 maximum

**APPLY in writing to:** NODA Board  
c/o Mary Dana Prescott  
Cloverfield Farm  
9445 Metcalf Rd  
Willoughby, OH 44094

**Include this information:** Outline why you should receive a grant, what function you plan to attend, and where it is to be held. State how you will share the content with NODA members (lecture, clinic, or article). Provide a flyer if available and include full cost of function.

**Questions?** Call Mary Dana at 440-256-8858

**Membership Requirements:**

You must be a "professional" horseperson as defined by the current USEF rule book .

## Calendar of Events



**XHALT EQUESTRIAN CENTER INC.**

14479 SOUTH ISLAND RD.

EATON TWP., OHIO 44028

WEB SITE: WWW.XHALTEQCENTER.COM

440 748-7502 ~ 216 299-3069

HORSE BOARDING-LIPIZZAN BREEDER

**Complete calendar listings with links available on the NODA Website**  
[www.nodarider.org](http://www.nodarider.org)

**4/12-15 17th ANNUAL EQUINE AFFAIRE**

[www.equineaffaire.com](http://www.equineaffaire.com)

**4/13-17 CLINIC WITH MIGUEL TAVORA** Woods Edge Stables 13540 Forest Rd, Burton, OH Anne Houin, 216-598-0821 [houin3@yahoo.com](mailto:houin3@yahoo.com)

**4/14 Kate Poulin Clinic** Timber Ridge Stables, 13401 River Road, Milan, Ohio Call 419-499-4575

**4/15 POLISH YOUR TEST FOR THE SHOW RING WITH CLARA ETZEL**, Cavallo Equestrian Center, Superior Twp, MI, [www.claraetzeldressage.com](http://www.claraetzeldressage.com) or Clara at [ClaraEtzeldressage@yahoo.com](mailto:ClaraEtzeldressage@yahoo.com)

**4/20-22 LEC Hunter/Jumper PRIX DE VILLES**, Lake Erie College Equestrian Center, Concord OH [www.lec.edu](http://www.lec.edu)

**4/21 RIDE-A-TEST CLINIC WITH AMY ROTHE-HEITTER (L)** Stony Ridge Stables, Wadsworth, OH [www.StoneyRidgeStables](http://www.StoneyRidgeStables)

**4/18-22, 2012 Reem Acra FEI World Cup™ Dressage Final** in 's-Hertogenbosch (NED), to be held in conjunction with FEI World Cup™ Jumping Final. [www.feeworldcup.org](http://www.feeworldcup.org)

**4/20-22 LEC Hunter/Jumper PRIX DE VILLES** Lake Erie College Equestrian Center, Concord OH; [www.LEC.edu](http://www.LEC.edu)

**4/21 RIDE-A-TEST CLINIC WITH JOANNE WHITE (L)** Contact Chris Snyder, [colbydsg@hotmail.com](mailto:colbydsg@hotmail.com), phone 440-740-0644 [www.BrecksvilleStables.com](http://www.BrecksvilleStables.com)

**4/21, Central Ohio Tack Sale & Exchange**, Gypsy Woods Farm, 10221 Askins Rd Richwood OH 43344. 9:00 am - 4:00pm. All Disciplines welcome! Held indoors rain or shine! Reservations must be received by April 17. To reserve your space.

Questions, call or text Jennifer Roth at 937.371.5262 or [dressagerider7@aol.com](mailto:dressagerider7@aol.com)

**4/26-29 ROLEX KENTUCKY THREE DAY EVENT** Lexington, Kentucky <http://www.rk3de.org/>

**4/27-29 DRESSAGE CLINIC WITH JAMES HOUSTON**, Goose Creek Stables, Lexington, KY Rides \$145, Auditing Free. Contact Kelly Gage 859-699-7383 or [tempichange@hotmail.com](mailto:tempichange@hotmail.com)

**4/27-28 DRESSAGE CLINIC WITH CAREL EIJKENAAR**, FEI "I" Judge, Trainer & Clinician, Shade Tree Farm, Bath, OH Contact Molly Gamin 330-618-8478 or [Touche112701@yahoo.com](mailto:Touche112701@yahoo.com)

**5/5 DUSTY BOOTS DERBY BENEFIT for Valley Riding, INC Therapeutic Riding Program**, Rocky River Stables, Rocky River OH. Sponsorship opportunities available. More info at [www.valleyriding.org](http://www.valleyriding.org) or Contact 216-267-2525 or [DustyBootsBenefit@yahoo.com](mailto:DustyBootsBenefit@yahoo.com)



**JANE KELLY**

Dressage Lessons, Clinics, Judging  
Hardscrabble Farm  
Tecumseh, MI

USDF Gold, Silver & Bronze Medalist

USDF Associate Instructor

USDF "L" Graduate Judge

USPC Graduate "A"

(517) 423-6239

(734) 277-5623

[www.janekellydressage.com](http://www.janekellydressage.com)

[hardscrabblefarm@hotmail.com](mailto:hardscrabblefarm@hotmail.com)



Julie R Taylor  
Instructor / Trainer  
[northcrest44@aol.com](mailto:northcrest44@aol.com)

### North Crest Equestrian Center

Dressage Lessons and Training – Lesson Horses Available

31735 Walker Road, Avon Lake, OH 44012

440-933-4654

[www.northcretequestrian.com](http://www.northcretequestrian.com)

#### Advertising rates:

	Month	Six Month
Full Page (7.5 x 10):	\$75.00	\$375.00
Half Page (5 x 7.5):	\$40.00	\$200.00
Quarter Page (3.75 x 5):	\$20.00	\$100.00
Business Card (3.75 x 2):	\$15.00	\$75.00

Contact Advertising Editor at [mosie-editot@nodarider.org](mailto:mosie-editot@nodarider.org)



## Calendar of Events

**5/5-6 RIDING WITH CONFIDENCE CLINIC with JENNY R. SUSSER**, McPhail Equie Performance Center, Michigan State University, MI [www.MidwestDressage.org](http://www.MidwestDressage.org)

**5/6 POLISH YOUR TEST WITH CLARA ETZEL**, Cavallo Equestrian Center, Superior Twp, MI [www.claraetzeldressage.com](http://www.claraetzeldressage.com)

**5/12 Grand Haven/NODA Schooling Show, Jefferson, Ohio**, [www.nodarider.org](http://www.nodarider.org) [www.grandhavenstable.com](http://www.grandhavenstable.com)

**5/12 CADS SCHOOLING DRESSAGE SHOW** Kildare Riding Academy Wooster, OH [www.CADSDdressage.org](http://www.CADSDdressage.org)

**5/18-20 GRAND HAVEN'S ADULT DRESSAGE CAMP** Grand Haven Stable [www.GrandHavenStable.com](http://www.GrandHavenStable.com)

**5/18-20 DRESSAGE CLINIC WITH CHARLES de KUNFFY** Topline Stables at Walden, Aurora OH, Information at [www.Topline-Stables.com](http://www.Topline-Stables.com)

**5/20 BRECKSVILLE STABLE DRESSAGE SCHOOLING SHOW** Brecksville Stables, Brecksville [www.BrecksvillStables.com](http://www.BrecksvillStables.com) Contact Chris Snyder, [colbyds@hotmail.com](mailto:colbyds@hotmail.com), phone 440-740-0644

**5/22-23 DRESSAGE CLINIC WITH CHRISTOPH HESS** (FEI Dressage Judge) Lexington, KY Contact Kelly Gage, 859-699-7383 or [TempChange@hotmail.com](mailto:TempChange@hotmail.com)

**5/26 STONEY RIDGE STABLES DRESSAGE SCHOOLING SHOW** Stoney Ridge Stables Wadsworth OH [www.StoneyRidgeStables.com](http://www.StoneyRidgeStables.com)

**6/8 WPDA DRESSAGE CLASSIC AT GRAND HAVEN STABLE**, USDF & USEF Recognized [www.wpaddressage.org](http://www.wpaddressage.org)

**6/9-10 DRESSAGE AT GRAND HAVEN** USDF & USEF Recognized, Grand Haven Stable, Jefferson, OH [www.GrandHavenStable.com](http://www.GrandHavenStable.com)

**6/16 CADS SCHOOLING DRESSAGE**, Kildare Riding Academy, Wooster, OH [www.CADSDdressage.org](http://www.CADSDdressage.org)

**6/17-18 DRESSAGE DERBY I & 11**, Lake Erie College, Concord, OH <http://www.lec.edu/equestrian/shows>

**6/23 NODA Schooling Show at Stoney Ridge, Wadsworth, Ohio**, [www.nodarider.org](http://www.nodarider.org)

**6/24 GRAND HAVEN DRESSAGE SCHOOLING SHOW**, Grand Haven Stable, Jefferson, [www.GrandHavenStable.com](http://www.GrandHavenStable.com)

**6/30—7/1 USDF/FARMVET REGION 2 ADULT DRESSAGE CLINIC WITH LILO FORE** Lake Erie College, Concord, OH Rider and Auditor Information [www.usdf.org/calendar/](http://www.usdf.org/calendar/) [www.nodarider.org](http://www.nodarider.org)

**7/7 CADS SCHOOLING DRESSAGE SHOW**, Kildare Riding Academy, Wooster, OH [www.CADSDdressage.org](http://www.CADSDdressage.org)

**7/8 NODA Schooling Show at Grand Haven Stable** [www.nodarider.org](http://www.nodarider.org)

**7/21 STONEY RIDGE STABLES**

**DRESSAGE SCHOOLING SHOW**, Stoney Ridge Stables, Wadsworth, OH [www.StoneyRidgeStables.com](http://www.StoneyRidgeStables.com)

**7/21 NODA DRESSAGE '12 SHOW, USEF & USDF** Recognized, Grand Haven Stable, Jefferson OH [www.nodarider.org](http://www.nodarider.org)

**7/22 NODA DRESSAGE '12 ENCORE SHOW, USEF & USDF** Recognized, Grand Haven Stable, Jefferson [www.nodarider.org](http://www.nodarider.org)

**8/11-12 WPDA SUMMER SIZZLER DRESSAGE SHOW**, USDF & USEF Recognized, Grand Haven Stable, Jefferson, OH [www.wpaddressage.org](http://www.wpaddressage.org)

**8/12 NODA Schooling Show at Cross Winds Stable** [www.nodarider.org](http://www.nodarider.org)

**8/18 CADS SCHOOLING DRESSAGE SHOW**, Kildare Riding Academy, Wooster, OH

**8/18 STONEY RIDGE STABLES DRESSAGE SCHOOLING SHOW**, Stoney Ridge Stables, Wadsworth, OH [www.StoneyRidgeStables.com](http://www.StoneyRidgeStables.com)

**9/2 NODA Schooling Show at Rocky River** [www.nodarider.org](http://www.nodarider.org)

**9/15 CADS SCHOOLING DRESSAGE SHOW**, Kildare Riding Academy, Wooster, OH [www.CADSDdressage.org](http://www.CADSDdressage.org)

**9/22 STONEY RIDGE STABLES DRESSAGE SCHOOLING SHOW**, Stoney Ridge Stables, Wadsworth OH [www.StoneyRidgeStables.com](http://www.StoneyRidgeStables.com)

**9/21-23 GRAND HAVEN'S ADULT DRESSAGE CAMP**, Grand Haven Stable, Jefferson, [www.GrandHavenStable.com](http://www.GrandHavenStable.com)

**10/7 GRAND HAVEN DRESSAGE SCHOOLING SHOW**, Grand Haven Stable, Jefferson, [www.GrandHavenStable.com](http://www.GrandHavenStable.com)

**10/20 STONEY RIDGE STABLES DRESSAGE SCHOOLING SHOW**, Stoney Ridge Stables, Wadsworth OH [www.StoneyRidgeStables.com](http://www.StoneyRidgeStables.com)

**10/11-14 2012 USDF/GAIG REGION 2 CHAMPIONSHIPS** Kentucky Horse Park, Lexington, KY

**10/19-21 DRESSAGE CLINIC WITH CHARLES de KUNFFY** Topline Stables at Walden, Aurora OH Information at [www.Topline-Stables.com](http://www.Topline-Stables.com)

**10/13 NODA Schooling Show at Chagrin Valley Farms** [www.nodarider.org](http://www.nodarider.org)

**10/14 NODA Schooling Show Championship—must qualify to compete.** [www.nodarider.org](http://www.nodarider.org)

**11/17 NODA YEAR-END AWARD BANQUET and CELEBRATION** [www.nodarider.org](http://www.nodarider.org)

**12/5 – 8, 2012 ADEQUAN/USDF CONVENTION**, New Orleans, LA, [www.usdf.org/convention](http://www.usdf.org/convention)

# Classifieds

## Classified ADS

**NODA Member/2 months**  
**FREE 60 words or less**  
**\$5.00 60- 80 words**

**Non-member/ 2 months**  
 \$5.00 60 words

**Photo:**  
 \$5.00 additional for photo

**Free ads will run for two months ONLY.**

Submit Ad & payment by 15th of the month.

**FREE Stable Listings as a member service** include contact info city & three lines.

**Ads will be edited.**

Website posting included for all Ads.

**Mail payment to:**  
 NODA Classified  
 3244 Camden Rue  
 Cuyahoga Falls, OH 44223

**Email ad to**  
[Mosie-editor@nodarider.org](mailto:Mosie-editor@nodarider.org)

## HORSES FOR SALE OR LEASE

**FOR SALE: Tizayo. FEI Junior Horse, 11 year old, KWPN gelding.** Lifetime registered including FEI Passport. Fun to ride, easy to sit, nice gaits and attitude. Safe, great horse for an Amateur who wants to earn their Bronze medal tomorrow or a Junior wishing to compete at NAJYRC and Gladstone. Call or email Cassandra at 216-926-8789  
[hummertjohnsonc@uky.edu](mailto:hummertjohnsonc@uky.edu)  
 (6/12)

**For Sale: Sweeten ,15.3 TB mare,** Would make a nice pony club or 4H horse; she was to be used for 4H this upcoming season, but rider decided to get out of horses. Does better in regular work. Potential for work to 2nd level with even, quiet flying change. Very good jump and good work ethic on the flat. Email Sara for video. 908-240-6949. Norton, OH. **\$3500 obo.** (6/12)

**For Sale: HAFLINGER GELDING, Dylan a 14.2 hh, 9 yrs old, Palomino gelding** Shown at recognized shows at First Level, winning scores in the 60's. Schooling 2nd/3rd level easily. Good jumper. Sound. No vices. Videos available. Contact Clara Etzel at (440) 669- 5714 or [claraetzel@dressage@yahoo.com](mailto:claraetzel@dressage@yahoo.com) (5/12)

**Half Lease:** Belgium/QH cross mare, 11 yrs. old, big 14.3 hh, requires at least an advanced beginner rider, quiet, good ground manners, training level dressage/hunt seat, lease at [www.dreamonfarm.com](http://www.dreamonfarm.com), contact [Janet@dreamonfarm.com](mailto:Janet@dreamonfarm.com) (6/12)

## WANTED

**Lease Wanted: 2 students at Rocky River Stables looking for sensible school master to co-lease.** Both riders are competent & caring, one adult, one in high school. Students interested in participating in NODA school shows. Horse would need to be boarded at Rocky River Stables. Please contact Margaret McElhany, 216-267-2525 [valleyriding@sbcglobal.net](mailto:valleyriding@sbcglobal.net) (6/12)

**Horse Wanted:** 4th level or PSG horse. 15h - 16.3h, older fine provided horse is still sound and capable of competing and scoring in the 60's, very ride-able horse is required. Looking for any leads, price \$20,000 and under. This will be my last horse. Can offer nice retirement home when finished competing, with lots of pasture time. Contact Jeanne Fashempour [LedgeHollowStable@Yahoo.com](mailto:LedgeHollowStable@Yahoo.com) (5/12)

## APPAREL, TACK, & SERVICE

**Central Ohio Tack Sale & Exchange,** Gypsy Woods Farm, 10221 Askins Rd Richwood OH 43344. Saturday April 21, 2012 9:00 am - 4:00 pm, All Disciplines welcome! Will be held indoors, rain or

shine. Reservations must be received by April 17. To reserve your space. Questions, call or text Jennifer Roth at 937.371.5262 or email [dressagerider7@aol.com](mailto:dressagerider7@aol.com)

**For Sale: Size 6 children's breeches.** One pair knee patch (fawn) and one pair full seat (fawn). Very good condition. \$10 and \$20. E-mail [fleurdelysfarm@hotmail.com](mailto:fleurdelysfarm@hotmail.com) (6/12)



**Wintec-wide 18.5" all purpose w/ cair panels, 56" girth, 2 sets of irons (one brake-away) 1 set of webbers, 1 set of synthetic leathers, O/S gullet kit.** \$500 Contact Janet Boyle at [janetb@en.com](mailto:janetb@en.com) (6/12\$)

**Heart in Hand Ranch. Natural horsemanship difficult horse specialist** for colt starting lessons/ problem solving for horse and rider including trailer loading, bucking, biting, rearing, shyness, explosive behavior. 50+ years of experience; references. No force.

**Port Lewis Impression Pad® saddle fittings at your barn or mine;** foolproof way to evaluate saddle fit. Specialized corrective saddle pads available. Joyce Dickson (440) 236-6413 [www.heartinhandranch.com](http://www.heartinhandranch.com) (6/12)

**PADDOCK BOOTS** Brown Smith-Worthington size 8.5. New, in box, never worn. \$45.

**ANSUR CLASSIC - TREELESS DRESSAGE SADDLE** Size, Petite, comparable to 17 – 17.5 inch. Excellent used condition. **\$1100**

**OBO** Call 330-995-6010 or [MemberRep@nodarider.org](mailto:MemberRep@nodarider.org) (5/12)

## STABLE LISTINGS

**Breckville Stables, Inc. Cleveland MetroParks 440-526-6767**  
 Stalls cleaned 6 days/wk, 3 feeds/day. T/O included.

**Bridlewood Dressage Farm Medina, Ohio Cheryl Slawter 330-239-1997**  
[CBridlewood@aol.com](mailto:CBridlewood@aol.com)  
 Board from \$300 (may be reduced for barn work), 2 indoor and 1 outdoor. Excellent care, friendly.

**Cloverfield Farm Mary Dana Prescott Kirtland, OH 440-256-8858**  
 Boarding, training, lessons; dressage/jumping. Travel for clinics/shows/your farm.

**Cross Winds Farm Bob Weston Chagrin Falls, OH 44023 (440) 543-5698 (440) 829-8165**  
[www.thecrosswindsfarm.com](http://www.thecrosswindsfarm.com)  
[remington75@windstream.net](mailto:remington75@windstream.net)  
 Boarding, training, dressage and eventing . **Stalls available**

**Fair Weather Farm Dressage: Kate Poulin 386-624-3968**  
[katepoulin@yahoo.com](mailto:katepoulin@yahoo.com)  
**Chagrin Falls, OH**  
 Heated barn/indoor, Grass /all season T/O, stalls cleaned 2X/day. Two outdoors, trails, security.

**Grand Prix Farm Kelli Flanagan Valley City, OH44280 330-483-9055**  
[www.grandprixfarm.com](http://www.grandprixfarm.com)  
 Boarding, lessons, schoolmasters available, indoor & outdoor arena, heated observation room

**Kirgis Farm Mantua, OH 330-554-1716**  
[www.kirgisfarm.com](http://www.kirgisfarm.com)  
 Dressage/event barn, T/O, competent staff, large stalls, pastures, safe fencing, indoor.

<p><b>KKM Stables</b> Karen Stephens Bellville, OH 419-688-1331 <a href="http://www.KKMStables.com">www.KKMStables.com</a> <a href="mailto:KKMStables@aol.com">KKMStables@aol.com</a> Full-Service quality dressage training thru the Levels. Improve balance, strength of horse &amp; rider.</p> <p><b>Ledge Hollow Stable</b> Jeanne &amp; Terry Fashempour Lodi, OH 330-239-2587 <a href="http://www.Watchbearnewfoundlands.com/page.15.html">www.Watchbearnewfoundlands.com/page.15.html</a> NE Medina County minutes from I -71, 271, &amp; 77. Full care/co-op. Lessons, training, T/O, indoor.</p> <p><b>Meridian Farm</b> Lauren Ball Tisdale Chagrin, OH 44022 216-288-8834 <a href="http://www.transitionsdressage.com">www.transitionsdressage.com</a> Board with full or half training packages and sales. Haul in lessons welcome.</p> <p><b>North Crest Equestrian Center</b> Julie Taylor Avon Lake, OH 44012 (440) 933-4654</p>	<p><a href="http://www.northcrestequestrian.com">www.northcrestequestrian.com</a> Dressage training &amp; lessons, summer horse camps, birthday parties. <b>Pleasant Valley Farm</b> Kris Lanphear Willoughby Hills, OH 440-942-9034 References. Board, grass T/O, trails, lessons, care of special need horses. Natural training.</p> <p><b>Rivendel Farm</b> Bonnie Gray Dale Lappert , R Dressage Judge Garrettsville, OH (330) 527-4683 evening (440) 813-4009 days Board, dressage/eventing. Small, experienced care, 7 day T/O . Indoor/outdoor, trails, jumps.</p> <p><b>Rocky River Stables</b> Cleveland Metro Parks Rocky River (216) 267-2525 <a href="http://www.valleyriding.org">www.valleyriding.org</a> Boarding, lessons, pony /horse camps, therapeutic riding, indoor &amp; outdoor arena, trails.</p> <p><b>Rhythmic Ridge Ranch</b> Debi Smith Lorain County 440-315-2660</p>	<p>Full care, indoor and lighted outdoor, matted stalls and heated water buckets.</p> <p><b>Sendon Way Equestrian Center</b> Nancy Lewis-Stanton Chardon, OH 44024 440-286-2536 <a href="http://www.sendonway.com">www.sendonway.com</a> Board, dressage training packages. Buy/sell assistance. Haul-in lessons.</p> <p><b>Shade Tree Farm</b> Betsy Rebar Sell Bath, OH 330-351-1124 <a href="mailto:brsell@aol.com">brsell@aol.com</a> Full care, indoor and outdoor arenas, trails, turnout, lessons, and training.</p> <p><b>Shadow Facs Farm</b> 814-796-6161 <a href="http://www.shadowfacsfarm.com">www.shadowfacsfarm.com</a> Dressage and combined training, instruction, and sales.</p> <p><b>Three Point Farm</b> Karen Deitrick Wendi Skelly North East, PA 814-725-6844</p>	<p><a href="http://www.threepointfarm.com">www.threepointfarm.com</a> Boarding, dressage lessons&amp; training, horse sales.</p> <p><b>Topline Stables at Walden</b> Janeen Langowski-Grava Aurora, OH 44202 330-995-0039 440-666-6182 <a href="http://www.topline-stables.com">www.topline-stables.com</a> <a href="mailto:janeengrava@earthlink.net">janeengrava@earthlink.net</a> Boarding, lessons, clinics, sales, training, kids camp. Full care, indoor/outdoor, grass pastures.</p> <p><b>Woodwind Farm</b> Newbury, Ohio Chuck Kinney 440-564-9399 440-773-3216 (cell) <a href="http://www.woodwindfarmjumps.com">www.woodwindfarmjumps.com</a> Exceptional care, equine-friendly facility. Boarding, lay-ups, training and lessons. Indoor, turnout.</p> <p><b>Xhalt Equestrian Center</b> Phyllis Setter Columbia Station, OH (216) 299-3096 <a href="http://www.Xhalteqcenter.com">www.Xhalteqcenter.com</a> Adult boarding /training. Lorain county close to I-480/Cuyahoga County. Indoor/outdoor, pasture.</p>
---	--	---	---

## NODA Advertising

**Deadline for submission:** 15th of each month  
(e.g. If received by 15th September your ad will publish in October.)

All Ads will be placed on the NODA website for no additional charge.

**Layout should be emailed to:**

[Mosie-editor@nodarider.org](mailto:Mosie-editor@nodarider.org)

(w x h)	Ad Rates	
	1 month	6 month
Full Page (7.5 x 10):	\$75.00	\$375.00
Half Page (5 x 7.5):	\$40.00	\$200.00
Quarter Page (3.75 x 5):	\$20.00	\$100.00
Business Card (3.75 x 2):	\$15.00	\$75.00

Please complete form & enclose payment in full. **Make Check Payable to: NODA**

**Send to:** NODA News  
3244 Camden Rue  
Cuyahoga Falls, OH 44223

Please note payment for ads must be received **by the newsletter deadline of the 15th** for your ad to be placed in the next month's issue.

Ad Size \_\_\_\_\_ Amount enclosed \$ \_\_\_\_\_ USD

Name: \_\_\_\_\_ Company: \_\_\_\_\_

Address: \_\_\_\_\_

City: \_\_\_\_\_ State: \_\_\_\_\_ Zip: \_\_\_\_\_

Phone: ( \_\_\_\_\_ ) \_\_\_\_\_ Fax: \_\_\_\_\_ E-mail: \_\_\_\_\_

**Northern Ohio Dressage Association  
2012 Membership Form**



**Date:** \_\_\_\_\_  **Renewal**    **New Member**    **Adding Family**   **USDF#** \_\_\_\_\_

NODA Newsletters are available at [www.nodarider.org](http://www.nodarider.org); the NODA Handbook is emailed as a pdf file.

**For those individuals who want publications sent via USPS, there is an additional fee for printing and mailing the Newsletters and Handbook.**

**NODA membership runs 12/1/2011 through 11/30/2012**

NODA is a United States Dressage Federation Group Member Organization. All NODA members are automatically USDF group members; \$20 of your NODA membership dues go towards your group membership in USDF. Group member benefits include a full year's subscription to the official USDF magazine, eligibility for USDF Rider Awards, and the opportunity to audit many USDF programs and participate in recognized shows without the payment of USDF non-member fees. Supporting Family Members will not get a personal copy of the USDF magazine, or be eligible for USDF Participating Member Discount. See [www.nodarider.org](http://www.nodarider.org) for benefit details.

**New in 2012: Youth\*** is a new NODA membership category and includes both Juniors (JR) and Young Riders (YR). Sign up for YOUTH membership unless you turn 22 or older in 2012. If you turn 22 or older in 2012, you must sign up for Adult Amateur or Professional membership. Note that NODA schooling shows and year-end awards may have separate Junior categories. Consult the NODA Schooling Show Prize List and Year End Awards guidelines for the definition of the Junior category.

Member Name: \_\_\_\_\_

Adult Amateur    Professional    **Youth\***, birth date required: \_\_\_\_\_

Additional Family Member Name: \_\_\_\_\_

Adult Amateur    Professional    **Youth\***, birth date required: \_\_\_\_\_

Additional Family Member Name: \_\_\_\_\_

Adult Amateur    Professional    **Youth\***, birth date required: \_\_\_\_\_

Address: \_\_\_\_\_

City, State, Zip: \_\_\_\_\_

Phone: \_\_\_\_\_      Email: \_\_\_\_\_

Include Email in NODA Handbook Directory?    Yes    No

Would you like to be involved in a NODA Committee?    Yes    No

Do you have special skills or business expertise such as graphic design, equine massage, sports therapy, other, that you might be willing to share with NODA or have included in the Handbook? If yes, list here: \_\_\_\_\_

**Membership Dues:**

Adult Amateur or Professional    \$45.00    \_\_\_\_\_

Youth\*                                        \$35.00    \_\_\_\_\_

Family Member                            \$20.00    \_\_\_\_\_

Supporting Family Member          \$10.00    \_\_\_\_\_

Mailing fee (required if you want the Newsletter and Handbook mailed via USPS)    \$6.00    \_\_\_\_\_

TOTAL ENCLOSED:                    \$ \_\_\_\_\_

**Please make checks payable to NODA and mail to:**

**NODA Membership  
Fran Cverna  
12212 Snow Rd  
Burton, OH 44021**

Membership questions call Fran at 440-834-1774, email [membership@nodarider.org](mailto:membership@nodarider.org). Other questions, call Dee Liebenthal at 330-562-8455 email [president@nodarider.org](mailto:president@nodarider.org).

NODA News  
3244 Camden Rue  
Cuyahoga Falls, OH 44223

NONPROFIT  
Bulk Rate  
US Postage Paid  
Permit No. 6  
Novelty, OH 44072