

NODA News

Northern Ohio Dressage Association



Cover:

Shannon O'Hara riding Royal Thomas owned by Kirsten Thomas is the 2013 NODA Schooling Show Champion at Second Level.

Photo by Jennifer Shaw

Inside:

2013 School Show Championships Photos, page 6

October Schooling Show and Schooling Show Championship results, pages 8-10

Learning Through Social Media, page 12

From Our Members, page 14

NODA—Past and Present, page 18

2014 NODA Membership Form, page 20

2013 NODA Executive Board

President

Dee Liebenthal
330-562-8455
president@nodarider.org

Vice President

Niki Sackman
vp@nodarider.org

Treasurer

Jennifer Kick
440-487-1925
treasurer@nodarider.org

Secretary

Patti Valencic
secretary@nodarider.org

Parliamentarian

Dale Lappert
330-527-4683
parliamentarian@nodarider.org

Directors at Large

Alice Brightup
Alice-DAL@nodarider.org

Barb Soukup
Barb-DAL@nodarider.org

Kathy Kirchner
330-995-6010
Kathy-DAL@nodarider.org

Gail Patton
440-442-5256

Mary Dana Prescott
440-256-8858

Greetings from the President



Dee Liebenthal and Rens

Dear Noda Members,
Cold weather has arrived too soon for me. However, the leaves have been lovely and we have enjoyed some nice sunny days, even if a bit brisk. My thick-coated GSD says she is happy that her favorite season is here; however, I would rather it stay 70 degrees all winter. I feel my old bones complaining more and more every winter.

We are very happy and very excited to report that NODA has won recognition in two USDF award categories this year. Our Website won Honorable Mention, and Jeni Gaffney's article, "Barn Fire Prevention" in the March 2013 NODA News, won Best General Interest Article. Both awards are for submissions from GMOs with between 175 and 499 members. Both Linda Cooley our dedicated webmaster, and Dr. Jeni Gaffney are happy with this recognition. Jeni wanted me to

also to thank Mosie Welch for her editing assistance. Congratulations to Linda, Jeni, and Mosie. I think most of you will agree that our website and newsletter are very well done, and we are proud of both.

We wrapped up our series of three USDF Instructor Certification workshops October 26th and 27th. I can't say enough about how well this whole program went. We were completely green at putting these workshops together when we started out, and we have learned a great deal with each successive workshop. Even though there are things we may do differently in the future, the Participating Instructors that were enrolled certainly have gained valuable tools and information to enhance their teaching abilities. They are all well on their way down the road to eventual certification, should they choose. There will be more to come about this past weekend, including more pictures.

We all really enjoyed working with Vicki Hammers-O'Neil. She was professional, knowledgeable and fun. Vicki and our previous USDF faculty members, Sarah Martin and Bailey Cook, shared their knowledge and



Participating Instructors (PIs) Back row, L-R: Liz Biddick, Janeen Langowski-Grava, Anne McClintock, Regina Sacha-Ujcz, Marty Costello, Michelle Tyner, Julie McElhaney. Front row, L-R: Christina Cardenas, Vicki Hammers-O'Neil (USDF Faculty) and Barb Soukup (volunteer scribe).

2013 Committees

Communications

Correspondence Secretary:

Rosemary Rufo
330-527-7836
correspondence@nodarider.org

Newsletter Editors:

Layout/Content: Elizabeth Bross
814-881-2786
Elizabeth-editor@nodarider.org
Advertising/Content: Mosie Welch
330-618-5838
Mosie-editor@nodarider.org
Review/Editing: Sharon Lewis
Sharon-editor@nodarider.org
Classifieds: Jill Voigt
216-346-2811
Classifieds@nodarider.org

Webmaster and Facebook: Linda Cooley
440-941-6269
webmaster@nodarider.org

External Relations: Lisa Gorretta
440-543-8682
ext-relations@nodarider.org

Educational Programs

Co-chairs:

Marcia Doyle
330-562-8456
Marcia-Edu@nodarider.org
Berni Moauro
330-467-0619
Berni-Edu@nodarider.org

Membership & Handbook

Chair: Fran Cverna
440-834-1774
membership@nodarider.org

Junior & Young Rider Liaison:

Lauren Hunter
812-655-0375
jr-yr@nodarider.org

Member Liaison: Kathy Kirchner
330-995-6010
memberrep@nodarider.org

Professional Liaison: Mary Dana Prescott
440-256-8858

Historical

Historian: Lora Burgess
440-554-6736
historian@nodarider.org

Competitions

Recognized Show

Chair: Niki Sackman
rs-chair@nodarider.org
Manager: Robyn Ambrose
440-858-2164
rs-manager@nodarider.org
Show Secretary: Mary Lou Gallagher
216-251-7469
rs-secretary@nodarider.org
Volunteer Coordinator: Karen Eisenhauer
330-220-4705
rs-vol-coord@nodarider.org
Sponsors/Advertising: Mary Armstrong
440-289-7265
sponsors@nodarider.org

Schooling Show

Chair: Kara Maruszak
440-655-9376
schoolingshow@nodarider.org
Show Secretary: Jennifer Tulleners
440-213-6685
ss-secretary@nodarider.org
Volunteer Coordinator: Gail Patton
440-442-5256

Year-End Banquet

Chair: Carol Cassano
216-272-185
banquet@nodarider.org

Awards

Chair: Janeen Langowski-Grava
440-666-6182
yearend-awards@nodarider.org

NODA's Board welcomes all comments and opinions regarding NODA activities, shows and policies. Please contact member liaison Kathy Kirchner.

Monthly board meetings are held the second Monday of each month from 7 to 9 pm at Panera Bread, 6130 Kruse Drive in Solon.

Members are welcome to attend. See monthly calendar for details as on occasion the location of the meeting

Newsletter Advertisers



Gold Level Show Sponsor

Silver Level Show Sponsor

Shade Tree Farm
with Stein Equine

Buckeye Nutrition

CMP Equine Transport

Cross Winds Farm

Equestrian Pursuits
Massage by Mosie Welch

Ledge Hollow Stable

Mary Armstrong Dressage

North Crest
Equestrian Center

Rivendel Farm

Saddles 101

Schneider Saddlery

The Dressage Foundation

The Visiting Vet

Topline Stables

United States
Dressage Federation

Valley Riding, Inc.
at Rocky River Stables

gave our PIs a good idea of what they must do going forward towards certification. NODA will do what we can to help them down that road. More to come, so stay tuned.

Thank you to our Education Committee Co-Chairs, Berni Moauro and Marcia Doyle. Thank you to our PIs for participating in this, our first series. Thank you also to Lake Erie College Equestrian Center for partnering with NODA for two of these workshops.

By the time you get this edition of the newsletter, you will have received your invitation to NODA's annual Celebration and Awards Banquet. I hope that even if you are not applying for awards, you will consider attending. It is a good opportunity to socialize with friends in dresses instead of breeches.

The Banquet Committee is working hard to get everything finalized. We have some very nice raffle items, and knowing that you have a one or more chance in maybe 140 to win something really nice might entice you to take part. It's a fun way to celebrate the end of another competition year. You should also have received your NODA

membership renewal for 2014. Please remember to fill out the survey on the back to have your name entered into a drawing for a \$50 gift card. We really want you to tell us what you think, what you want, and what you need from us. The gift card drawing will be at the end of February. If you return your membership by November 30th or sign up at the banquet, you will also have a chance to win a free membership for 2015.

Remember that NODA would not exist without its members. We want to understand what you want NODA to be for you. Fill out your survey and give us your opinions. We really want to know.

I hope to see many of you at the Banquet.

Stay warm; spring is only six months away.

Dee Liebenthal, President



Kristin Stein



Shade Tree Farm

IS A BOARDING AND TRAINING FACILITY FOR
THE DISCRIMINATING DRESSAGE RIDER

IT OFFERS

FULL CARE FOR THE HORSE

INDOOR/OUTDOOR ARENA WITH EXCELLENT FOOTING

WOODED BRIDLE PATHS

TURNOUT

TRAINING AND LESSONS

**IS CURRENTLY ACCEPTING
HORSES FOR TRAINING
AND STUDENTS FOR INSTRUCTION AT
SHADE TREE FARM IN AKRON, OH**

USDF BRONZE MEDALIST
COACH OF INTERCOLLEGIATE NATIONAL FINALIST
IN JUMPING 2 CONSECUTIVE YEARS
2009 REGION 1 CHAMPION TRAINING LEVEL
2010 REGION 2 RESERVE CHAMPION FIRST LEVEL
2011 REGION 2 SEVENTH PLACE SECOND LEVEL
2012 REGION 2 FOURTH PLACE THIRD LEVEL
CURRENTLY ATTENDING THE L JUDGES PROGRAM



CONTACT KRISTIN STEIN FOR MORE INFORMATION:
304-830-0529 STEINEQUINE@YAHOO.COM WWW.STEINEQUINE.COM
BETSY REBAR SELL, OWNER/TRAINER 330-351-1124
MOLLY GAMIN, BARN MANAGER 330-618-8478

NODA Year-End Celebration & Awards Banquet



November 16, 2013
Crowne Plaza Hotel, Independence OH

Advance Reservations Only

\$35 per person
Festivities begin at 5:30

Cash Bar and Mingle

Dinner followed by our Awards Program

Table reservations see the information next column

NODA Member Slide Show

E-mail pictures of you and your horse to
Carol Cassano, Banquet@nodarider.org

Raffle

Receive one ticket with registration

Help the Geauga County Dog Shelter

Bring
Canned and dry cat and dog food
Treats
Laundry soap
Bleach
Paper towels
Blankets
Sheets
Towels
Leashes
Collars
Medical supplies
Cleaning and office supplies
Printer paper
HP 22 tri-color ink cartridges/HP-21 black ink cartridges
Fine-tip erase markers
CASH
Kennel sponsorship

Banquet Program ADS

Congratulations and Thank You ADS
Low member rates

Business AD space

Contact Kathy Kirchner at
memberrep@nodarider.org
OR

consult our www.nodarider.org
for ad prices and sizes

IT'S BANQUET TIME!

NODA's annual year-end celebration and awards banquet will take place November 16th. We had a wonderful time last year and are looking forward to this year's event. Your invitation should have arrived in your mailbox. We hope you will attend, and that you return your reservation at your earliest opportunity.

Please note: **only mailed reservations, paid in full, will be accepted, and only if postmarked by November 11th.** There will be no exceptions.

We are pleased to offer table reservations

again this year, and we'd like to clarify the procedure for reserving tables. If you and your friends/family/barn mates wish to reserve a table of eight, **one person** will return the reservation form **with full payment for the table and the names of the eight people who will be at the table.** If a reservation is received without full payment and/or without the names of eight people, it will not be honored.

Payment can be made in any combination of checks, cash, and NODA Bucks, as long as the table is paid in full when the reservation is sent. We understand that individuals' plans can change, so changes may be made to the names of the people attending by contacting Rachel Caracci [at rec4488@gmail.com](mailto:rec4488@gmail.com) no later than 8:00 PM November 14th (Thursday prior to the banquet).

If you have not received your invitation to the banquet, please contact Kathy Kirchner at
MemberRep@nodarider.org

or

you can find the invitation on our website
www.nodarider.org
and print it from there.

**We look forward to seeing you
at the banquet!**

2013 NODA Schooling Show Championship Photos

Photos by Kara Maruszak



Left: Michelle Cobb on You Bett is Zip, Winner of Intro Novice YR. Center: Leah Mooney with Reese, Winner of Intro Novice AA and W/T Equitation. Right: Ashton Yarosh on left with Hot Java, Reserve Champ of Training Novice Open and Champion of Training Novice Open, Richard Tyner on right with Tenacious D.



Left: Left is Jennifer Toth with Murphy, Champion of Training Novice AA and on right, Lauren Van Lehn with Mary Rose, Reserve Champion. Right: On left, Peggi Ignagni with MRF Bello di Notte, Champion of Training Open AA and Crissteen Miller with Easy Swinger, Reserve Champion.



Below Left: Champion First Open Adult Amateur Robin Hill with Quintessential Center: Tay Laster with kit 'Astrophe, Reserve Champion, First Open Adult Amateur Right: Amy Pajcic on Mary Rose takes the third place, First Open, Adult Amateur.



For complete Championship results please see page 10

*Stop in & check out the latest
Fall apparel for you and your
horse!*



ON SALE
\$89.95

**Our Ultra
Tough 1680D
Ballistic Nylon
Midweight
Turnout**

*Sale prices valid through
11/22/13*

**Now
Carrying!!!**



dansko®

*~The Items you want~
~The Brands you LOVE~
At the BEST prices!*



WWW.BIGDWEB.COM

9998 St. Rt 43, Streetsboro, OH 44241
1-800-321-2142 or 330-626-5000

Store Hours:
M-F 9:30-6:30
Sat 9:30-5:00
Closed Sunday



**Oviedo Xline Bridle
by Wembley**

\$89.95



**Soft Dagmar Bridle
by Kieffer**

\$264.95



NODA Schooling Show at Chagrin Valley Farms

October 5, 2013

High Point Intro:

AA: Kelley Gillett Intro C Open 66.500%

YR: Evelyn Tyner Intro C Open 70.250%

High Point Training and Above:

AA: Lisa Keck Training 3 Open 69.800%

YR: Alaina Rolenz Training 1 Novice 66.042%

Intro A Novice AA (C) Bass

1	Kara Maruszak	Irish Cameo Rose	64.063%
2	Cheryl Duffy	Winona	58.125%

Intro B Open (C) Bass

1	Kelley Gillett	Zoros Huracan	64.375%
2	Rachel Caracci	Anikan	64.063%
3	Mary Armstrong	Rachstarr	60.313%

Intro B Open YR (C) Bass

1	Evelyn Tyner	Bur-Dal Chaos	65.313%
2	Kennedy Sorm	Bless This Mess	62.188%
3	Meghan Sozio	Paint By Numbers	61.875%

Intro A Novice YR (C) Bass

1	Hope Duffy	Winona	60.313%
---	------------	--------	---------

Intro C Novice AA (C) Bass

1	Leigh Mooney	Reese	63.500%
---	--------------	-------	---------

Intro C Novice YR (C) Bass

1	Lillian Patterson	Beau Thai	63.000%
---	-------------------	-----------	---------

Walk Trot Equitation (C) Bass

1	Noelle Ignagni	MRF Bello Di Notte	YR8.000
2	Hope Duffy	Winona	YR6.800
1	Leigh Mooney	Reese	AA9.000
2	Kara Maruszak	Irish Cameo Rose	AA7.000

Training 2 Novice (C) Bass

1	Diane Jackson	Arthur	63.036%
2	Emily Jackson	Tour en L'air	61.786%



BOARDING - LESSONS - TRAINING - Dressage - Eventing

Enjoy the use of our 123 acres!!

Full care board, 2 Indoor arenas, Outdoor arena, Cross Country Course, 11 Beautiful Grass Pastures and Trails.

Lesson horses of all levels available

Owner/Trainer: Bob Weston:

16490 Munn Road, Chagrin Falls, OH 44023

Barn: 440-543-5698 Cell: 440-829-8165

♦ **Stalls Cleaned 6 days a week**

♦ **Four feedings daily**

♦ **Optional 6 days a week outdoor turnout, year-round**

♦ **2 Full-time staff living on premises**

♦ **And much more..**

Join our relaxed and friendly farm

www.TheCrossWindsFarm.com Bob@TheCrossWindsFarm.com

Training 2 Novice YR (C) Bass

1	Alaina Rolenz	Leos Arabella Rose	62.321%
2	Richard Tyner	Tenacious D	62.321%
3	Andrea Avramovic	Sally	56.786%

Training Level Rider Test (C) Bass

1	Niki Sackman	Mercedes Colortyme	64.400%
---	--------------	--------------------	---------

Training 2 Open (C) Bass

1	Rose Marhevka	Class Picture	68.393%
2	Amy Craig	Jessica NHH	64.464%
3	Lisa Keck	Epona	63.036%
4	Jennifer Toth	Murphy	62.321%

Training 2 Open YR (C) Bass

1	Evelyn Tyner	Hall of Fame	64.643%
2	Catherine Patterson	Mito's Azure	62.321%

Dressage Seat Equitation (C) Bass

1	Emily Jackson	Tour en L'air	AA7.700
2	Amy Craig	Jessica NHH	AA7.300
1	Evelyn Tyner	Hall of Fame	YR8.500

First 1 Open (C) Bass

1	Robin Hill	Lasting Impressions	63.621%
---	------------	---------------------	---------

First 1 Open YR (C) Bass

1	Sydney Koenig	Brandee Artandra	61.207%
---	---------------	------------------	---------

Second 1 Open (C) Bass

1	Lisa Van Nieuwal	William	57.429%
2	Rachel Dombeck	Two tone Toffee	57.286%

First 3 Open YR (C) Bass

1	Sydney Koenig	Brandee Artandra	56.129%
---	---------------	------------------	---------

Second 3 Open (C) Bass

1	Shannon O'Hara	Royal Thomas	64.286%
2	Jennifer Tulleners	Kodakhrome	62.381%

Third 3 Open (C) Bass

1	Bitsy Gascoigne	Aibrean	57.564%
---	-----------------	---------	---------

Intro B Novice AA (C) Hughes

1	Leigh Mooney	Reese	64.688%
2	Kara Maruszak	Irish Cameo Rose	63.438%
3	Cheryl Duffy	Winona	57.813%

Intro B Novice YR (C) Hughes

1	Noelle Ignagni	MRF Bello Di Notte	66.250%
2	Hope Duffy	Winona	58.125%

Intro C Open (C) Hughes

1	Kelley Gillett	Zoros Huracan	66.500%
2	Rachel Caracci	Anikan	65.500%

Intro C Open YR (C) Hughes

1	Evelyn Tyner	Bur-Dal Chaos	70.250%
2	Meghan Sozio	Paint By Numbers	64.750%
3	Kennedy Sorm	Bless This Mess	60.000%

Training 1 Novice (C) Hughes

1	Diane Jackson	Arthur	60.417%
---	---------------	--------	---------

Training 1 Novice YR (C) Hughes

1	Alaina Rolenz	Leos Arabella Rose	66.042%
2	Lillian Patterson	Beau Thai	65.417%

USEA One Star Test B (C) Hughes

1	Noell Sivertsen-Edgell	Official Plan	31.667%
---	------------------------	---------------	---------

Training 3 Novice (C) Hughes

1	Niki Sackman	Mercedes Colortyme	64.400%
2	Emily Jackson	Tour en L'air	62.600%
3	Helen Welch	Django Unchained	61.000%

Training 3 Novice YR (C) Hughes

1	Andrea Avramovic	Sally	63.200%
2	Richard Tyner	Tenacious D	63.000%
3	Ashton Yarosh	Hot Java	62.000%

Training 1 Open (C) Hughes

1	Rose Marhevka	Class Picture	64.167%
---	---------------	---------------	---------

Training 1 Open YR (C) Hughes

1	Catherine Patterson	Mito's Azure	65.208%
---	---------------------	--------------	---------

Training 3 Open (C) Hughes

1	Lisa Keck	Epona	69.800%
2	Amy Craig	Jessica NHH	69.400%
3	Peggi Ignagni	MRF Bello Di Notte	67.800%
4	Tara Kilburg	Wrangell Zephyr	66.800%
5	Jennifer Toth	Murphy	65.600%
6	Helen Welch	Django Unchained	65.000%

First 2 Open YR (C) Hughes

1	Sydney Koenig	Brandee Artandra	62.297%
---	---------------	------------------	---------

Second level Rider Test (C) Hughes

1	Mary Armstrong	Great Gatsby	69.000%
---	----------------	--------------	---------

First 2 Open (C) Hughes

1	Michele Vonk	Crusader Creek	63.649%
---	--------------	----------------	---------

Training 3 Open YR (C) Hughes

1	Evelyn Tyner	Hall of Fame	65.600%
---	--------------	--------------	---------

Second 2 Open (C) Hughes

1	Jennifer Tulleners	Kodakhrome	61.053%
---	--------------------	------------	---------

Third 1 Open (C) Hughes

1	Patty Minter	Viktor	67.237%
2	Cynthia Hagan	Argostino	65.484%
3	Bitsy Gascoigne	Aibrean	63.421%
4	Patty Minter	Lyrical	62.500%

First 3 Open (C) Hughes

1	Rachel Dombeck	Two tone Toffee	69.516%
2	Robin Hill	Lasting Impressions	65.484%
3	Deb Winkler	Morante	62.581%

NODA Schooling Show Series Championship Show
Chagrin Valley Farms
October 6, 2013

Intro Novice YR (C) Bass (H) Hughes

1	Michelle Cobb	You Bett is Zip	65.782%
2	Rachel Gould	Sir Fuji	62.032%
3	Cassandra Hauck	Incandescence	60.626%
4	Noelle Ignagni	MRF Bello di Notte	59.375%

Intro Novice AA (C) Bass (H) Hughes

1	Leigh Mooney	Reese	69.376%
2	Janice Boehm	Jenn's Second Chance	60.938%
3	Gina Ash	Grenadine	59.219%

Intro Open YR (C) Bass (H) Hughes

1	Evelyn Tyner	Bur-Dal Chaos	66.250%
2	Meghan Sozio	Paint by Numbers	61.375%

Intro Open AA (C) Bass (H) Hughes

1	Rachel Caracci	Anikan	67.188%
2	Lea Wojtkiewicz	Winter Sky	66.094%
3	Kelley Gillett	Zoros Huracan	63.282%
4	Colleen Becker	Smokin' Silver Guns CB	61.563%

Walk Trot Equitation (C) Bass (H) Hughes

1	Leigh Mooney	Reese	8.8
2	Kara Maruszak	Irish Cameo Rose	7.5

Walk Trot Equitation YR (C) Bass (H) Hughes

1	Noelle Ignagni	MRF Bello di Notte	8.3
2	Meghan Sozio	Paint by Numbers	7.7

Training Novice YR (C) Bass (H) Hughes

1	Richard Tyner	Tenacious D	62.000%
2	Ashton Yarosh	Hot Java	61.700%
3	Andrea Avramovic	Sally	59.300%

Training Novice AA (C) Bass (H) Hughes

1	Jennifer Toth	Murphy	64.700%
2	Lauren Van Lehn	Mary Rose	63.300%
3	Cathy Suffecool	Dash Like a Jet	61.600%
4	Amanda Turk	US Marshal	57.100%
5	Niki Sackman	Mercedes Colortyme	56.500%

Dressage Seat Equitation (C) Bass (H) Hughes

1	Amy Craig	Jessica NHH	7.7
---	-----------	-------------	-----

Training Open YR (C) Bass (H) Hughes

1	Becky Kirk	Oreo Blizzard	66.700%
2	Evelyn Tyner	Hall of Fame	62.300%

Dressage Seat Equitation YR (C) Bass (H) Hughes

1	Evelyn Tyner	Hall of Fame	8
---	--------------	--------------	---

Training Open AA (C) Bass (H) Hughes

1	Peggi Ignagni	MRF Bello di Notte	69.400+%
2	Crissteen Miller	Easy Swinger	69.400%
3	Kimber Mackenzie	Incandescence	67.300%
4	Tara Kilburg	Wrangell Zephyr	66.400+%
5	Rose Marhevka	Class Picture	66.400%
6	Lea Wojtkiewicz	Knights Moonshadow	64.700%
7	Michele Vonk	Crusader Creek	64.300%
8	Tay Laster	kit 'Astrophe	63.400+%
9	Amy Craig	Jessica NHH	63.400%
10	Helen Welch	Django Unchained	58.200%

First Open YR (C) Bass (H) Hughes

1	Katharine DeLorean Werner		62.178%
2	Sydney Koenig	Brandee Artandra	55.403%

First Open AA (C) Bass (H) Hughes

1	Robin Hill	Quintessential	68.629%
2	Tay Laster	kit 'Astrophe	63.307%
3	Amy Pajcic	Mary Rose	61.452%
4	Deb Winkler	Morante	60.162%

Second Open AA (C) Bass (H) Hughes

1	Shannon O'Hara	Royal Thomas	67.024%
2	Jennifer Tulleners	Kodakhrome	61.965%

Third Open AA (C) Bass (H) Hughes

1	Bitsy Gascoigne	Aibrean	62.564%
---	-----------------	---------	---------

Mark your Calendar
for our
Holiday Store Sale

Friday, December 6th 10am-6pm &
Saturday, December 7th 10am-5pm
NODA 11 2013

Making the *Connection* Between Tradition and Innovation

Visit SSTACK.COM Today and Shop our Dressage Collection

Joseph Sterling® Aachen
Dressage Halter & Lead



Dressage Accessories from
Joseph Sterling® & Back on Track®

Joseph Sterling® Dressage
Snaffle Bridle with Crank



Schneider Saddlery

8255 E. Washington Street
Chagrin Falls, OH 44023

Mon-Wed, Fri 10am-6pm, Thurs 10am-7pm
Sat 10am-5pm, Sun Closed

800-365-1311

sstack.com

SCHNEIDERS

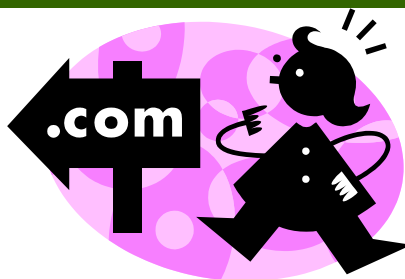
Value Priced Horse Supplies Since 1948

Learning Through Social Media

by Elizabeth Bross

As the hours of daylight become more limited and the holidays draw near, many dressage enthusiasts begin thinking a little less about their beloved discipline. Whether you are giving your horse a well deserved break after a lengthy competition season or are simply tied up with other commitments, thinking outside the box will allow you to easily continue to incorporate learning into your daily routine. If you have internet access in any form, a wealth of free equestrian information is at your fingertips. All forms of social media are flooded with contributors eager to share their knowledge and experiences. Following legitimate sources on social media is an easy way to engage the dressage part of your brain throughout your day.

Determining which sources are the most educational to you is a process of trial and error. Newer riders should discuss who they are following and what they are reading with their instructor or more experienced



Determining which sources are the most educational to you is a process of trial and error.

riders. Instructors can encourage their youth students to follow professional riders and well-known publications with the goal that they begin to think about the different aspects of our sport. Regardless of your level or expertise, always remember to proceed with caution. These resources are not regulated, so you must use your own judgment.

As with any internet site, the anonymous nature of social media can cause some users to voice opinions that they would otherwise keep to themselves. I encourage you to look for welcoming platforms with members that are not overly critical. If you join a group and find that comments tend to be irrational, ignorant or just stated in a rude and gruff manner; can be a confusing move on. There are thousands of options available and you will just need to find what suits you best.

One of my favorite Facebook pages is Olympic eventer Denny Emerson's Tamarack Hill Farm. Denny initiates and moderates conversations on topics that most dressage

Topline Stables At Walden



1109 Aurora-Hudson Rd. - Aurora - Ohio- 44202

330-995-0039 Office 440-666-6182 Cell



BOARDING - LESSONS - CLINICS - SALES - TRAINING

"Excellence In Horse Care & A Friendly Atmosphere"

Amenities Include

Full-Care Board and Training Facility, Indoor & Outdoor Arena, Grass Pastures, Daily Turnout,

Stalls Cleaned Daily, Three Feedings Daily & MUCH MORE!!

Owner/Trainer: Janeen Langowski-Grava

- ♦ USDF Bronze & Silver Medalist
- ♦ Member of NODA, USDF, & USEF
- ♦ Active Participant in Clinics & Horse Shows
- ♦ Lesson horses/school masters available



www.topline-stables.com janeengrava@earthlink.net

riders will find valuable. His riding advice is often blunt and simple. Thanks to the Tamarack Hill Farm Facebook feed, a phrase that often comes to my mind while riding is “dance the canter.” In three or four sentences, Denny’s “dance the canter” post was something that resonated with me. He stressed the importance of the 1-2-3 rhythm while keeping the withers up to increase the jump. He also pointed out that (in his numerous years of experience) many riders don’t include enough canter in their dressage schooling sessions, which has pushed me to ensure I’m spending adequate time in the gait. Having never met Denny (let alone ever taken a lesson with him) it amazes me that because I spend time perusing his site and thinking about the insight he’s shared via the internet that he’s influenced my riding. In addition to riding advice, the Tamarack Hill Farm Facebook feed also includes thoughts on the state of modern eventing, endurance riding, overall horsemanship, and personal fitness. The Tamarack Hill Farm Facebook page is a good one to follow regardless of which riding discipline you are involved with.

The Eurodressage website (www.eurodressage.com), Facebook page and Twitter account helps the average American rider understand the European dressage competition scene. With the most up-to-date results and news posted in a timely manner, you don’t have to travel across the pond to see who’s who. Services like Eurodressage consolidate information from many different sources, which ensures you are receiving complete coverage. The latest about the most commonly heard equestrian names is just the beginning. Lesser known riders are also mentioned on a regular basis and pony competition is covered. Another exciting aspect of the website is to see seasoned Grand Prix horses listed for sale. The ad videos are worth the few minutes to watch—even if you aren’t shopping. A variety of training articles are also posted. Many are written by Sarah Warne, a long time student of Nuno Oliveira. Sarah provides great insight on her training process in a down-to-earth way.

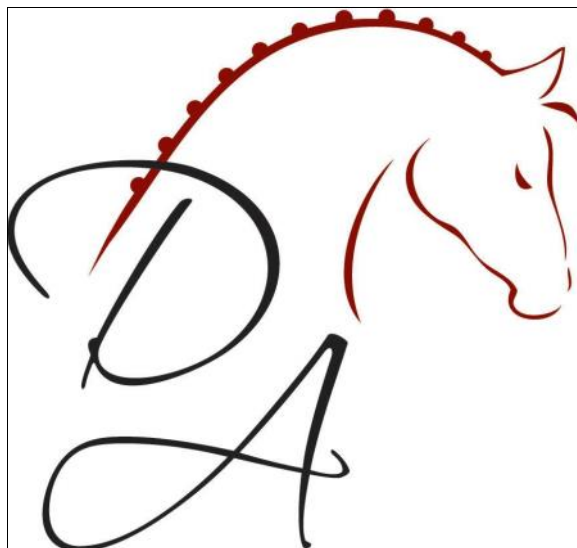
My top suggestion is the Dressage Academy Facebook

page and Twitter, where you will find training quotes from the masters of our sport posted almost daily. These quotes will provoke deep thought on your riding and horsemanship. The Dressage Academy website (www.dressage-academy.com) is also beginning to offer reasonably priced webinars--interactive online sessions with top trainers. The website also offers of the option to sign up for an email subscription, which is a nice alternative for those that do not utilize social media. If you only chose one account to follow, make it Dressage Academy!

The annual Equestrian Social Media Awards (www.equestriansocialmediawards.com) website is a helpful reference when searching for reliable resources. The ESMAs are broken down into numerous categories and ten finalists are listed under each. The reach of the ESMAs is global, so there is a good chance you will see some unfamiliar names, organizations and companies. Exploring what you don’t automatically recognize is a great way to learn more about our international sport.

Your very own NODA also has an active Facebook page! If you haven’t already, please be sure to “like” it.

Webmaster Linda Cooley does a nice job keeping it up-to-date with the latest NODA and USDF news. Linda also regularly posts a variety of non-NODA related equestrian information which will make you think or just bring a smile to your face.



Pictured is the Dressage Academy’s logo. The Dressage Academy is Elizabeth’s top pick for social media and you can get started just by visiting their Facebook page dedicated to “expanding public knowledge of this magnificent sport by integrating modern-day technology, information and training tactics with classical dressage principles for the betterment of the human/equine interaction, as well as the sport of dressage.”

Our busy schedules do not always allow time for auditing clinics, reading full length books and watching videos. There is no replacement for these resources, but social media can be a great supplement to your dressage education. Don’t underestimate the power of brief moments of reflection on the theory of dressage. You may be surprised to see how significant an influence a few sentences can have on your next ride.

From Our Members



Right: **NODA Junior/Young Rider member Julia Christopher** and her horse **Diego Everado** are **Region 2 Reserve Grand Champions** for Training Level, JR/YR and took third place in the Freestyle Championship, Open First Level.



Above: **Julia** and her barn mates celebrate their **Region 2 Dressage Championship** successes! Member **Julia Christopher** is second from the left, on her left is **Laura Headley**, then to her right **Molly Jackson**, **Susan Griffiths**, and **Julia's trainer, Joanne White**. Top three photos taken by **Jean Christopher**.



Pictured left: **NODA professional member Clara Etzel** and her horse **More Coffee Please (Reggie)**. Clara and Reggie were featured in the August 2013 publication of *America's Horse* in an article called *Dance Partners*. Clara is an FEI dressage competitor who owns and operates Clara Etzel Dressage, LLC. just outside of Ann Arbor, MI. Below: *Dance Partners* featured in the *America's Horse* article.



These members let us know what they are doing! We would love to hear from you. Send us your photographs with the subjects and horses identified in the file name for each photo and captions in the email.

Send to mosie_editor@nodarider.org



Become a Certified Barn Today!

Earn quarterly rebates
for every bag of
Buckeye® Nutrition
purchased!

Do You:

- ☐ Own a few horses?
- ☐ Own a barn full of horses?
- ☐ Spend too much \$\$\$ on feed?
- ☐ Want to save \$\$\$ on your feed bill?
- ☐ Like receiving checks in the mail?

If you checked one or more boxes, this is the program for you!

*Hay analysis and customized feeding
recommendations available*



Contact Janice Lavrich, District Sales Manager

330.958.1826 • JLavrich@BuckeyeNutrition.com

Trust the Experts in Equine Nutrition

www.BuckeyeNutrition.com



© 2013 MARS Horsecare US, Inc.

Youth Silent Auction

USDF is seeking donations for the Youth Silent Auction, to take place at the [2013 Adequan/USDF Annual Convention](#) in Lexington, KY. Donations are fully tax deductible and all proceeds will benefit the USDF Youth Convention Scholarship Fund. If you or your business has an item or service to donate, please contact the USDF [office](#).

Renew Your USDF Membership NOW for 2014!

Renew your USDF Participating Membership online, but December 31, 2013, and receive a \$10 gift certificate from Dover Saddlery!

Only members as of December 31 will receive the 2013 yearbook issue of USDF Connection. All members who renew for 2014 will enjoy savings with USDF's new Member Perks partners. Questions? Email membership@usdf.org.

Steffen Peters and Scott Hassler Returning to Succeed/ USDF FEI-Level Trainers' Conference

Olympian Steffen Peters and USEF National Young Dressage Horse Coach, Scott Hassler, will return to headline the 2014 Succeed/USDF FEI-Level Trainers' Conference. The conference will be held January 20-21, 2014 at Mary Anne McPhail's High Meadow Farm in Loxahatchee, Florida.

USDF Announces New Certified Instructors

The United States Dressage Federation (USDF) is pleased to announce and congratulate its new USDF Certified Instructors at Training through First Level. The new USDF Certified Instructors/Trainers are Jennifer Kaiser of Lafayette, IN, Corinna Scheller-Fleming of Falls Village, CT, Kim Aikens of Petoskey, MI, Emme Johnston of Snow Camp, NC, Bonnie Walker of San Diego, CA, Crystal Taylor of Greenville, RI, and Denise Laigle of Harrah, OK.

The USDF Instructor/Trainer Program is designed to set a standard of excellence in dressage training and instruction in the United States and to educate dressage riders, instructors, and aspiring instructors.

"It is our pleasure to recognize these accomplished individuals and we are proud to have them as representatives of the USDF Instructor/Trainer Program," stated Kathie Robertson, USDF Senior Education Programs Coordinator.

For more information on the USDF Instructor/Trainer Program, to view a calendar of workshop or testing dates, or to obtain details on hosting a workshop or testing session, please visit the USDF website at www.usdf.org or contact the USDF education programs department at instructorcertification@usdf.org.

VIP Seating for the 2014

Adequan Global Dressage Festival Now On Sale Stabling Packages Still Available

Wellington, FL - October 22, 2013 - Equestrian Sport Productions (ESP) announces that VIP table seating is now on sale in the Global Pavilion at The Stadium at Palm Beach International Equestrian Center (PBIEC) for the 2014 Adequan Global Dressage Festival (AGDF). Seating is limited and will fill up fast, so reserve your tables now by contacting Anne Caroline Valtin at 561-784-1133 or annecaroline@equestriansport.com.

Tables options for the Adequan Global Dressage Festival CDI events include: Tables options for the Adequan Global Dressage Festival CDI events include first row tables (which include sponsorship) that seat six, second row tables for six, and third row tables for four people.

Stabling Packages Available

Limited stabling packages are also available at The Stadium at PBIEC for 2014 AGDF exhibitors, and they will be allocated on a first come, first served basis. Make sure to reserve your stalls now and receive priority choice in stalls for the following years! The available packages include:

- Stable package I: Runs from January 8, 2014 through March 30, 2014.
- Stable package II: Offers a six (6) week board starting the 1st of the month until the 15th of the following month.
- Stable package III: Offers a month's board starting the 1st of the month and ending on the last day of the month.
- FEI Stalls are not included in the above packages.

Stable package IV (FEI PACKAGE): Runs from January 8, 2014, through March 30, 2014, in FEI Barn. * ATTENTION: Please note those who plan to use their Dressage FEI stalls during off weeks while other disciplines are utilizing the AGDF FEI Barn under FEI Quarantine Rules; either will agree to all FEI requirements in place, or will agree to be reassigned another stall outside of the FEI area for that week.

To obtain a stabling request form, please visit: <http://globaldressagefestival.com/esp/pdf/gdfforms/2014AGDFPermanentStallPackages.pdf>

Equestrian Sport Productions is excited to welcome the world's top dressage riders as well as up-and-coming riders and horses to a season full of international and national showing opportunities at the Adequan Global Dressage Festival. For more information, please visit www.globaldressagefestival.com.



Bob Weston

Boarding ♦ Training ♦ Dressage ♦ Eventing

16490 Munn Road ♦ Chagrin Falls, Ohio 44023

Phone (440) 543-5698 ♦ Cell (440) 829-8165

E-Mail Bob@TheCrossWindsFarm.com

www.TheCrossWindsFarm.com

**MARY ARMSTRONG DRESSAGE *USDF BRONZE & SILVER MEDAL-
FREELANCE FEI RIDER, TRAINER & TEACHER**



**Regional Intermediate 1 Champion
& Competed
Through Grand Prix**

**SPECIALIZING IN COMPETITION &
TRAINING STRATEGIES FOR BUSY ADULTS
AND YOUNG RIDERS
Lessons, Clinics, Discussions**

WILL TRAVEL TO YOUR LOCATION

CHECK MY WEBSITE AT:

www.marmstrongdressage.com or

Email at: maryarmstrong74@gmail.com

Cell 440-289-7265

CHESTERLAND, OHIO

Dressage Foundation News

Dear NODA Members,

You have a chance to win a County Perfection Saddle!

There are only a few weeks left to enter The Dressage Foundation's drawing for a County Perfection Saddle! **Entries close on Thursday, December 5th.** See the ad above and go to www.dressagefoundation.org to submit your chance to win!

Jenny Johnson, the Administrative Director for The Dressage Foundation, as well as several of TDF's board members will be present for the drawing to be held at the USDF convention. We hope to see you there!

The Dressage Foundation
1314 O St. Suite 305, Lincoln NE 68508
402.434.8585

CUSTOM SADDLE FITTING AND FLOCKING



SADDLES101

Heather Soones-Booker

SMS Qualified Saddle Fitter



135 Hunt Road
Portersville, PA 16051

Heather@saddles101.com
www.saddles101.com

240-431-1318



Equestrian Pursuits, LLC

**Equine Massage
by Mosie Welch**

330-618-5838

mosie_welch@hotmail.com
www.equestrianpursuits.com

**Flexible and Strong
Ready to Perform**



The DRESSAGE FOUNDATION



Helps In So Many Ways ...

**You
Feelin'
Lucky
Dressage Rider?**

Enter Our
FREE DRAWING
for a Fabulous

County Perfection Saddle



For entry and further information:
www.dressagefoundation.org

NODA—Past and Present from the NODA Website

Want to learn a little about NODA? Something about dressage? And a whole lot about what is going on in the world of dressage? Go to NODA's award winning website managed by Linda Cooley, www.nodarider.org. Here is an article taken from the "About Us" tab of the website providing an overview of NODA's development as a Group Member Organization.

Nurtured by a handful of Dressage pioneers during its inception in 1969, NODA has grown from a grass-roots organization into one with nationwide influence. NODA's 300+ members represent a widespread demographic area and people of all ages. We include riders of every level who own or lease horses, have their horses in training or take occasional lessons on school horses. Their riding goals and NODA involvement vary with their available time and love of horses. Integrated within NODA's membership are trainers, instructors, judges, technical delegates and international FEI competitors that provide educational support for the horse and rider.

NODA was formed to promote and further interest in the understanding of dressage through education, active participation and support of local, regional, and national dressage activities. Today we are a [US Dressage Federation](#) Group Member Organization (GMO). NODA is one of the largest GMO's in [USDF Region 2](#) which consists of Illinois, Indiana, Kentucky, Michigan, Ohio, West Virginia, & Wisconsin.

NODA came into being mainly as an educational organization at a time when dressage was still largely a mystery in the Cleveland area (as it was in much of the United States). The initial formative meeting of NODA took place at Red Raider Camp in response to a letter written by Joan Rapp, with personalized notes exhorting people to give dressage a try. Red Raider Camp became a center of dressage interest by virtue of the influence of Emmy Temple, Suzanne Jones, Dale Lappert, Lynn Fry and Gail Patton. They, along with Joan Rapp, who became the founding president of NODA, were instructors at Red Raider at the time. The organization held early meetings both at Red Raider and the Chagrin Falls Library.

Schooling Shows were held at area stables with one or two people running the show. They took "the box" of show supplies to the show site and together with the judge, this skeleton crew managed the show with anywhere from 12 to 60 rides. Today, NODA offers a popular Schooling Shows Series each year with a Championship Show. Most of our schooling shows now

have two or three competition rings, and often more than 120 rides!

Recognized Shows NODA hosts and organizes two popular Recognized Shows each summer. They are certified by the U.S. Equestrian Federation and the U.S. Dressage Federation. The shows have three to four rings of competition and draw riders from around the United States.

Education NODA is an educational organization. We have sponsored many clinics and workshops. The first one was presented by Lockie Richards in the fall of 1969, followed by one given by Emmy Temple in the spring of 1971. Since then we have had many others including Hans Moeller, Bodo Hangan, Violet Hopkins, Jean Froisard, Jessica Ransenhansen, Carol Grant, Gabor Foltenyi, Terry Ciotti-Gallo and Major Anders Lindgren (NODA hosted five USDF Instructor Seminars with Major Lindgren in the early 1990s). During NODA's 44 years, other educational programs have been held for members and non-members alike. NODA has sponsored USDF "L" Programs, USDF Adult Camps, the Region 2 USDF/Premier Dressage Adult Clinic with Walter Zettl, and USDF Instructor/Trainer Certification Program.

At NODA workshops and clinics, we've learned how to interpret and ride dressage tests (including the rider tests), create a musical freestyle, take care of our "show nerves" with sport psychology, fill volunteer positions such as tabulating or scribing at shows, breed a better sport horse, and improve our riding with the Alexander Technique, T'ai Chi and yoga. Lectures have focused on such topics as equine health, trailer safety, approved bits, classical dressage, saddle and tack fit, helmet safety, and horse nutrition.

Awards and Celebration to top off each busy year, NODA hosts an annual awards banquet. NODA offers year-end awards for scores earned in recognized and unrecognized (schooling) competition, as well as special awards and trophies with specific criteria.

Leadership Past presidents of NODA, under whose leadership all this has evolved, are Joan Rapp, Emmy Temple, Peter Nelson, John Bogert, Dagmar Zimmerman, Dianne Braden, Patti Ferris, Lisa Gorretta, Margaret McElhany, Susan Horst, Carey Smith, Cindy Gibbs, Karen Eisenhauer, Dale Lappert, Janice Lawrenz and of course, our current president, Dee Liebenenthal. Our thanks to all of the hardworking officers, Board members, and committee

members who have served with NOPDA's dedicated presidents over the years.

Volunteers Everything we do is organized and run by hardworking volunteers!

~ shows, clinics, workshops, newsletter, website, awards banquet, silent auction ~

We congratulate all NODA members past and present for their dedication, contributions, participation, and volunteer hours. You have helped make NODA the equestrian association it is today. Thank you!

NODA's past helps to define it's present, so in 2011 NODA initiated a lifetime Achievement Award to recognize the pioneers who made NODA a reality and those who will come after them to continue NODA's legacy. **NODA Lifetime Achievement Award** recognizes and honors individuals who have devoted countless hours of service to NODA in the pursuit of excellence both to NODA and to our sport of Dressage.

The **NODA Lifetime Achievement Award** recognizes those individuals in the spotlight, as well as those quietly just doing the work, the person you think of when something needs to be done, someone who would remember how it has been done in the past, or someone who served years doing our committee work.

Recipients of the Lifetime Achievement Award helped to create the NODA we enjoy today. These are important people and should be remembered and honored.

2011 recipients Lifetime Achievement Award

Joan Rapp
Emmy Temple
Pat Lightbody
Gretchen Singleton
Patti Ferris
Ingrid Feder

2012 recipients Lifetime Achievement Award

Charles "Chuck" Kinney
Mary Dana Prescott

NODA has come a long way in 44 years. Since it's inception in 1969 it has been a guiding light for dressage in northeast Ohio and beyond. Help NODA continue to make a difference through your membership, time, talents, and dedication to dressage.

*It does not matter where you are in your journey . . .
it matters if you have the passion!*

Come Join the FUN!


**When the weather outside is frightful...
Please consider using your free time to
write an article for NODA News!**

All topics will be considered

**NODA Bucks will be awarded
according to the criteria listed on the
Newsletter page of NODA's website**

**Please email NODA News co-editors
Mosie Welch and Elizabeth Bross
to discuss your idea**

**mosie-editor@nodarider.org
elizabeth-editor@nodarider.org**



A Wolff Photography

e-TRAK

**USDF's online learning center for
dressage and equine education**

Through one convenient location

- access hundreds of educational resources,
- engage in structured learning activities,
- and earn USDF University Program credit.

Free to all members , e-TRAK is for you!

WWW.USDF.ORG



Northern Ohio Dressage Association 2014 Membership Form

NODA membership runs
12/1/2013 through 11/30/2014

NODA is a United States Dressage Federation Group Member Organization



A portion of your NODA membership dues go towards your group membership in USDF. A USDF Group Membership (GM) makes you eligible for USDF Rider Awards. Group Members may participate in recognized shows without the payment of USDF non-member fees, are eligible to earn university credits, receive member discount rates for USDF events, and receive the USDF Connection magazine. (Supporting Family members do not receive a subscription to the USDF Connection – one magazine per "family.") See www.nodarider.org or www.usdf.org for eligibility to qualify for USDF regional and national championships.

Date: _____ ☐ Renewal ☐ New

Name: _____ USDF # _____

☐ Adult Amateur ☐ Professional ☐ Youth, birth date required: _____

Youth is a NODA membership category that includes both Juniors (JR) and Young Riders (YR). Sign up for YOUTH membership unless you turn 22 or older in 2014. If you turn 22 or older in 2014, you must sign up for Adult Amateur or Professional membership. Note that NODA schooling shows and year-end awards may have separate Junior categories. Consult the NODA Schooling Show Prize List and Year End Awards guidelines for definition of Junior.

Address: _____ City, State _____ Zip: _____

Phone: _____ Email: _____

If you do NOT want your email printed in the NODA Handbook, check ☐ here

Additional/Supporting Family Name (1) _____ USDF # _____

(Must live at same address; includes ALL benefits, excludes USDF magazine and NODA newsletters):

☐ Adult Amateur ☐ Professional ☐ Youth, birth date required: _____

Phone: _____ Email: _____

If you do NOT want your email printed in the NODA Handbook, check ☐ here

Additional/Supporting Family Name (2) _____ USDF # _____

(Must live at same address; includes ALL benefits, excludes USDF magazine and NODA newsletters):

☐ Adult Amateur ☐ Professional ☐ Youth, birth date required: _____

Phone: _____ Email: _____

If you do NOT want your email printed in the NODA Handbook, check ☐ here

To add more family members, use other side of form, or contact membership@nodarider.org

NODA Newsletter subscription only Name _____

Newsletter subscription excludes USDF GM Membership, discounts, eligibility for NODA awards and Schooling Show Championship. This is not a membership.

Address: _____ City, State _____ Zip: _____

Phone: _____ Email: _____

Check all activities of interest to you

Will attend / participate / read

Will volunteer to help NODA

Awards program	_____	_____
Banquet	_____	_____
Education (clinics/seminars)	_____	_____
Governance (officers/chairs)	_____	_____
Newsletter	_____	_____
Recognized show	_____	_____
Schooling shows	_____	_____
Web site, social media (Facebook)	_____	_____
Other _____	_____	_____

NOTE: The printed NODA Schooling Show Prize List, details for the Awards Program, and the NODA Handbook will be mailed to members who join before June 1, 2014. All information about shows, awards and events is available all year at www.nodarider.org. Members are added to the NODA Newsletter mailing list as they join, all year long, but back issues are not sent. Join early in the year to enjoy the printed NODA News and the email E-News all year long!

Membership Dues:

Adult Amateur or Professional \$45.00 / Youth \$35.00 _____

Family Member (Amateur, Professional or Youth) \$20.00 _____

Family Member (Amateur, Professional or Youth) \$20.00 _____

Newsletter subscription only \$24.00 _____

Additional donation _____

____ Education ____ Awards ____ Scholarships

TOTAL ENCLOSED: _____

Please make checks payable to NODA and mail to:

Fran Cverna
NODA Membership
12212 Snow Rd
Burton, OH 44021

QUESTIONS?

Membership questions: call Fran Cverna at 440-834-1774 or email membership@nodarider.org

Other questions: call Kathy Kirchner at 330-995-6010 or email memberrep@nodarider.org

Renew Your NODA Membership EARLY for Chances to WIN!!!

Member News

NODA Receives Two USDF Awards in 2013

The Best General Article Award for GMO's with 175 - 499 members goes to regular *NODA News* contributor Jeni Gaffney, DVM for her article titled "Barn Fire Prevention," (Issue 3/March, 2013). The award plaque and the winning article will be on display at the 2013 Adequan®/USDF Annual Convention in Lexington, KY in December and award winners will be announced and receive their trophies at the Board of Governors General Assembly. Congratulations to Jeni Gaffney; we look forward to further submissions!

NODA's Website wins national recognition! Kudo's to Linda Cooley who works daily to present timely and up-to-date GMO, local, regional, and national news to NODA members and horse enthusiasts. Lauren Hunter submitted our wonderful website and Linda's fabulous work has won **Honorable Mention** in the website category of GMO's with between 175 - 499 members. Honorable Mention recipients will have their names announced at the Board of Governors General Assembly.

It is very exciting to learn that the hard work of our dedicated members is recognized for excellence at the national level. Thank you for supporting the Northern Ohio Dressage Association.

Congratulations to Linda and Jeni. Great job!!!!

WIN!!!

**Look for your 2014 NODA Renewal Form
in your mailbox!**

**Complete the Survey
that comes
with your renewal form
for a chance
to
WIN
a \$50 gift certificate!!!**

Your membership, time, and talents
make NODA a better GMO!

The NODA and USDF Membership Years Begin December 1st

Current members will receive a renewal form and a short survey in the mail in early November. You will notice the 2014 Membership Form is a full page, NODA's Membership Chair, Fran Cverna, has worked hard to make the form readable and easier to complete. Renew now and don't miss any news or information.

New this year is the opportunity to purchase an annual subscription to the *NODA News* for just \$24.00 for those who want to maintain ties with NODA, but don't need USDF or GMO benefits.

Also new this year is the opportunity to make a donation to NODA when you renew your membership and stipulate what type of program you would like to support.

Renew or join for 2014 on or before November 16 to be entered into a drawing for a free membership next year (2015). **Complete the survey you receive in the mail and return it** with your membership form to be entered into a separate drawing for a \$50 gift card!

Save a stamp if you are coming to NODA Banquet on November 16. You may turn in your membership form at the banquet.

**Renew Your NODA Membership
by November 16, 2014
and
be included in a drawing to
WIN
a 2015 NODA membership!**

?

**Have a Question?
Don't Know who to Ask?**

Check in with your *Member Liaison*: Kathy Kirchner
330-995-6010
memberrep@nodarider.org

Kathy's role is to help members
and point them "straight down centerline!"

**Please feel free to contact Kathy anytime
you have a question, comment, concern, or idea.**

NODA Volunteer News

NODA Extends Appreciation to Those Who Volunteered at the 2013 NODA Schooling Show Championships

The weather was unseasonably warm with blue skies for the invitation only, NODA Dressage Schooling Show Championships at Chagrin Valley Farms in Bainbridge, Ohio on October 6. The annual championship show is open only to non-professional Junior and Adult Amateur members who earn two minimum qualifying scores of 60% at Intro through First Level and a minimum qualifying score of 58% at Second Level and above. Scores must be earned from two different judges at a NODA Schooling Show or Schooling Shows that meet NODA's criteria for judging. Scores from NODA schooling shows may also be used to qualify for many end of the year awards and trophies. The 2013 schooling show champions and reserve champions will be recognized at the November 16 Year-End Awards and Celebration Banquet.

The NODA Schooling Show Championships are successful because of the hard work of many members who volunteer through-out the year. NODA thanks these dedicated volunteers who gave their time and expertise over the championship weekend.

Friday ring set-up: Mary Armstrong, Fran Cverna, Mary Lou Gallagher, and Gail Patton.

Saturday Show Volunteers: Shari Bobrowicz, Sue Michalik, Lea Wojtkiewicz, Caroline Hahn, Michelle Sheliga, Tay Laster, Sydney Koenig, Shannon O'Hara, Beth Scalabrino, Fran Cverna, Kim Shepard, Noell Sivetsen-Edgell, Katharine and Katharine DeLorean.

Sunday Show Volunteers: Sarah Hall, Joyce Dickson, Marlene Heinen, Nancy Danielson, Pam Reynolds, Sue Ogrinc, Jan Thompson, Kirsten Rall, Sally Pla, Ursula Stanton-Hicks, Melissa Borrer, Kate Lovejoy, Cindy Bank, Rachel Gould, Laura Gentile and Bitsy Gascoigne. **We could not have done it without you!**

NODA also sends our thanks to USDF Judges Carter Bass (S) and Sue Hughes (r) who judged the 2013 championships and to Chagrin Valley Farms for their great facilities and hosting yet another Schooling Show Championship.

North Crest Equestrian Center



Julie R Taylor
Instructor / Trainer
northcrest44@aol.com

Dressage Lessons and Training – Lesson Horses Available

31735 Walker Road, Avon Lake, OH 44012
440-933-4654
www.northcrestequestrian.com



Dr Jeni Gaffney

Dr Indy Peckham

1937 N Cleveland Massillon Road Akron Oh 44333



Our clinic location provides services for your dog and cat family members!

Wellness Exams

Dental Care

Routine spay, neuter procedures

Vaccinations

Radiology

Ultrasound

Our ambulatory Equine service offers:

Portable Digital Radiography

Digital Ultrasound

Equine Dentistry

Lameness Evaluation, Treatment, Maintenance

Sport Horse Maintenance



Visit us at: www.visitingvet.net



Rocky River Stables
19901 Puritas Ave.
Cleveland, OH 44135

216 267 2525

Margaret McElhany
President



NODA Board Meeting Minutes — September 9, 2013 at Topline Stables

In Attendance: Robyn Ambrose, Heather Soones-Booher, Carol Cassano, Linda Cooley, Fran Cverna, Marcia Doyle, Mary Lou Gallagher, Lisa Gorretta, Janeen Langowski-Grava, Lauren Hunter, Jennifer Kick, Kathy Kirchner, Dale Lappert, Dee Liebenthal, Gail Patton, Mary Dana Prescott, Patti Valencic, Mosie Welch.

Call to Order: Dee Liebenthal, President, called the meeting to order at 7:03 pm.

Minutes from August Board Meeting: Patti Valencic minutes approved.

Treasurer's Report: Jennifer Kick

- Checking Account balance: \$9,797.94.
- Savings Account Balance: \$5,015.75.
- USDF Convention Attendance –
 - Dale Lappert will be NODA's voting delegate. Barb Soukup will be the PM delegate, and Dee Liebenthal and Lisa Gorretta will also be attending. Registration is \$175 each. Barb and Dee will split the cost of hotel for 4 nights (\$594). Everyone is driving to it. (All this saves money).
- The board voted to cover a portion of expenses.

Membership & Handbook: Fran Cverna

- 328 total members. This is 21 more than last year.
- Board reviewed a revised membership form. We are changing from half page to full page.
- Single membership is \$35, and family membership is an additional \$20 for each person. Family members are required to live at same address.
- Fran proposed a third option: a "newsletter only subscriber". He/she would not be Noda member (not listed on membership list) or USDF or GMO member. The cost would be \$24 to cover the cost of the monthly newsletter. Email broadcasts could be included in the price. No report due to time limitation.

Education: Marcia Doyle & Berni Moauro

- Scholarship - For Workshop #2: Professional Liaison, Mary Dana Prescott, received an application for a scholarship for workshop 3 from Anne McClintock, Liz Biddick previously applied for one. Dee reminded the Board that there is \$1000 in the fund. The board voted to give both applicants a \$200 scholarship.

Schooling Shows : Kara Maruszak

- Dale Lappert wanted confirmation that the Rider test is included in Championship Show. This will be announced online. It was clarified post meeting, by email, that the Rider Tests were not to be included in the Championships but are eligible for year-end

awards. See January 2013 minutes and the 2013 prize list.

Website & Facebook: Linda Cooley

- There are an additional 117 likes on Facebook.

Elections: Parliamentarian Dale Lappert

- Dale announced nominations one at a time for each of the Board positions and asked three times if there were any more nominations.
- The nominees are: President: Dee Liebenthal, Vice President: Niki Sackman, Treasurer: Jennifer Kick, and Secretary: Patti Valencic. Nominees for Directors- at - Large are: Barb Soukup, Kathy Kirchner, Gail Patton, and Mary Dana Prescott. Mary Lou Gallagher offered to replace Alice Brightup.
- Nominations were closed and ballots will be mailed out by early October. The closing date will be the same date as closing day for Year End Awards- October 23rd.

Banquet: Carol Cassano

- Shannon O'Hara and Kirsten Thomas are considering chairing it next year and have offered to help with this year's banquet so Carol can show them the ropes before she moves. Peggy and Noelle Ignagni have also volunteered to help this year.
- Carol will be putting out a survey at the Banquet asking for suggestions for what members would like to see at next year's Banquet. (e.g., dinner vs. luncheon vs. cocktail party and appetizers).
- Buffets price is \$38-\$40. Plated prices are also higher this year. NODA may have to charge more than last year.

Member Liaison: Kathy Kirchner

- Kathy reminded the Board that when something is published telling people to contact Dee with questions or comments, it really is the Member Liaison who should be contacted.

JR/YR Liaison: Lauren Hunter

- Date and Locations for Region 2 - Lockport IL- Nov 2nd & 3rd
- Jr/Yr Clinic April 2014 - will reapply for 2014/2015.

Old Business

- Revised AA & Jr/YR Scholarship guidelines - tabled until October Board meeting.

New Business

- Adult Amateur Dressage Initiative - Lobbying the USDF and USEF – tabled until October as well.

Meeting Adjourned: 8:05 pm.

Program: Heather Soones-Booher, Saddles 101 - Saddle Fitting

Classifieds

Classified Ads

NODA Member/2 issues

FREE: 60 words or less
\$5.00: 60- 80 words
Photo \$5.00

Non-member/ per 2 issues

\$5.00: 60 words

Photo:

\$5.00/issue for photo in newsletter and on website

Free member ads will run for two issues only. One free ad per member at a time. Submit Ad and payment by 15th of the month.

Free Stable Listings: include contact info, city and three lines. Ads subject to editing. Website posting included.

Classified Editor: Jill Voigt
Phone: 216-346-2811

Check payable to NODA:
NODA Classified
c/o Jill Voigt
27059 Sanctuary Lane
Olmstead Township, OH
44318

Email ad to:
Classifieds@nodarider.org

HORSES FOR SALE OR LEASE

Half Lease: Thoroughbred Gelding. "Earl" is 14 years old, 16.2 hh, with a mellow temperament. He is a confidence builder and fun. Trail rides, road safe. Currently competing Intro Level Dressage. Located at Olmsted Township (Lewis Road). Easy access to trails and oversized arena. Contact Lora 440-554-6736. (I12)

For Sale: Icelandic Mare, 10y, 14H, Chestnut. Over 1 year training with Gudmar Peturssen. Very smooth tolt and trot. Has done fun shows, intro dressage, is great on trail. Good for farrier (barefoot), no bad stall habits, can be turned out with others or alone. Sweet, fun, smart, pretty, brave. \$6,500 but negotiable to good home nearby. Contact Jill 216-346-2811. (I12)

For Sale: Thoroughbred Mare, 2006, chestnut, 15.3H, registered with the Jockey Club. Very kind temperament. Shown in 4H walk/trot. Still green at the canter. Owner needs to sell ASAP. Asking \$3,500. For photo go to <http://claraetzeldressage.com>. Under saddle video available. Contact claraetzeldressage@yahoo.com or 440-669-5714. (I12)

For Sale: TB Gelding, 10YO, 15.3H, showing training and first level. Schooling shoulder-in, haunches-in and more. Very sweet affectionate horse, clips, loads, easy for farrier, not spooky on trail. Has been used in lessons with beginner riders on lunge, easy to sit, good for young rider or adult amateur. \$4,900 Call Jeanne 330-239-2587 or 330-416-2338. (I12)

For Lease: Friesian Gelding for in barn lease located in North Canton, 16.2H, 16 years old, training/first level. Suitable for intermediate rider that is willing to continue with his education. Lessons with barn trainer are strongly encouraged. Sound, healthy, no vices. Please contact Alexa at 330/340-9633 or acochra1@kent.edu. (I-13\$)

APPAREL& TACK

For Sale: Wintec Dressage Saddle with CAIR. 16.5" seat, Easy Change Gullet System fits any horse, narrow to extra-wide. CAIR Cushion System, easy care Wintec black Equileather. Comfortable, classic lines, excellent condition. Great for training or showing. Price includes Saddle, Easy-Change Gullet System (narrow to extra-wide) and Wintec Slimline 60" Stirrup Straps (used once). \$425 Contact Linda 440/829-8236 or Webmaster@nodarider.org. (S1-13)

For Sale: 17" County Connection saddle with extra wide tree. Buffalo leather with a deep seat. In great condition. For sale only because it no longer fits the mare it was purchased for. Asking \$2,000 O.B.O. Please contact Tracey at 440-417-3875. (I-12).

For Sale: Rembrandt Dressage Saddle -17.5" seat, adjustable tree. Black. Good condition, recently reflocked, new billet straps. Asking \$845. Contact Patti at 440-338-7177. (I-12)

For Sale: Albion dressage saddle. 17.5 seat, wide tree and gullet. Great condition, new billets. Asking \$1,200 OBO. Contact Anne McClintock 440-223-8236 (I-12)

For Sale: Passier "Grand Gilbert" 17.5 W Dressage Saddle with Stubben



leathers and girth. Paid \$2,332 for just the saddle, throwing in leather ,bridle and girth. Like new! Asking \$2,000 OBO. Contact Debbie Parker 330-321-2641. (I-12\$)

For Sale: Jane Heart 14 K Gold/Silver Dressage Pendant and Chain. This exquisite fine jewelry piece is a 14k



gold dressage head on a silver disc with a 20" silver chain. Like new. Selling on Jane Heart's web site for \$1,750. Asking \$1,000. Wonderful Christmas Gift. Contact Regina at regina.sacha@sbcglobal.net or 216.390.3702. (I-13\$)

SERVICE

Multiple Listings: Cloverfield Farm - Openings for board, training, and lessons. Classic dressage and up-some jumping, nice grass turnout. Could travel to your barn for lessons. Thoroughbred Hanoverian mare for lease, 16Y, 16.2H wonderful temperament. Also 2-horse trailer for sale, price reduced, extra high 7'6", extra wide stalls for large horses, steel body, ramp load, good condition. Call Mary Dana Prescott 440-256-8858. (I-13)

STABLE LISTINGS

Bridlewood Dressage Farm
Medina, Ohio
Cheryl Slawter
330-239-1997
CBridlewood@aol.com
Board from \$300 (may be reduced for barn work), 2 indoor and 1 outdoor. Excellent care, friendly.

Bristol Bay Equestrian Center
Nancy Lewis-Stanton
Newbury, OH
440 - 567-3057
rhavel97@gmail.com
Donna Sanders
440-479-9028
Beautiful private farm specializing in dressage. Training, lessons, sales, and board available.

Candle Light Farms
Noell Sivertsen-Edgell
Chesterland, OH 44026
440-376-2117
Sivertsenedgell@att.net
Boarding, lessons, sales, training, leases, indoor/outdoor

Cloverfield Farm
Mary Dana Prescott
Kirtland, OH
440-256-8858
Boarding, training, lessons; dressage/jumping. Travel for clinics/shows/your farm.

Cross Winds Farm
Bob Weston
Chagrin Falls, OH 44023
(440) 543-5698
(440) 829-8165
www.thecrosswindsfarm.com
remington75@windstream.net
Boarding, training, dressage and eventing . Stalls available

Fair Weather Farm
Kate Poulin
386-624-3968
katepoulin@yahoo.com
Chagrin Falls, OH
Heated barn/indoor, Grass /all season T/O, stalls cleaned 2X/day. Two outdoors, trails, security.

Kirgis Farm
Mantua, OH
330-554-1716
www.kirgisfarm.com
Dressage/event barn, T/O, competent staff, large stalls, pastures, safe fencing,, indoor.

STABLE LISTINGS

KKM Stables
Karen Stephens
Bellville, OH
419-688-1331 KKMStables@aol.com
www.KKMStables.com
Full-Service quality dressage training thru the Levels. Improve balance, strength of horse & rider.

Grand Prix Farm
Kelli Flanagan
Valley City, OH 44280
330-483-9055
www.grandprixfarm.com

Ledge Hollow Stable
Jeanne & Terry Fashempour
330-239-2587
Medina, OH 44256
www.LedgeHollowStable.com
Full care, co-op, turn-out, Instruction, NE corner of Medina county.

Meridian Farm
Lauren Ball Tisdale
Chagrin, OH 44022
216-288-8834
www.transitionsdressage.com

North Crest Equestrian Center
Julie Taylor
Avon Lake, OH 44012
(440) 933-4654
www.northcrestequestrian.com
Dressage training & lessons, summer horse camps, birthday parties.

Pleasant Valley Farm
Kris Lanphear
Willoughby Hills, OH
440-942-9034
References. Board, grass T/O, trails, lessons, care of special need horses. Natural training.

Rivendel Farm
Bonnie Gray
Dale Lappert, R Dressage Judge
Garrettsville, OH
(330) 527-4683 evening
(440) 813-4009 days
Board, dressage/eventing. Small, experienced care, 7 day T/O. Indoor/outdoor, trails, jumps.

Rocky River Stables
Cleveland Metro Parks
Rocky River, OH
(216) 267-2525
www.valleyriding.org
Boarding, lessons, pony /horse camps, therapeutic riding, indoor & outdoor arena, trails.

Rhythmic Ridge Ranch
Debi Smith
Lorain County
440-315-2660
Full care, indoor and lighted outdoor, matted stalls and heated water

Shade Tree Farm
Betsy Rebar-Sell
Bath, OH
330-351-1124
brsell@aol.com Full care, indoor and outdoor arenas, trails, turnout,

Shadow Facs Farm
814-796-6161
www.shadowfacsfarm.com

Three Point Farm
Karen Deitrick & Wendi Skelly
North East, PA
814-725-6844
www.threepointfarm.com

Topline Stables at Walden
Janeen Langowski-Grava
Aurora, OH 44202
330-995-0039
440-666-6182
www.topline-stables.com
janeengrava@earthlink.net
Boarding, lessons, clinics, sales, training, kids camp. Full care, indoor/outdoor, grass pastures.

Woodwind Farm
Newbury, Ohio
Chuck Kinney
440-564-9399 440-773-3216
www.woodwindfarmjumps.com
Exceptional care, equine-friendly facility. Boarding, lay-ups, training and lessons. Indoor, turnout.

Xhalt Equestrian Center
Phyllis Setter
Columbia Station, OH
(216) 299-3096
www.Xhaltcenter.com
Adult boarding /training. Lorain county close to I-480/Cuyahoga County. Indoor/outdoor, pasture.

Ledge Hollow Stable

982 Ledge road - Medina, OH 44256



Jeanne Miller-Fashempour
Bronze Medalist, FEI rider

Boarding - Lessons - Clinics School Masters for Lease

Indoor & outdoor arenas, Round Pen, Daily
Turn-out in Pastures and Paddocks.
Adjacent to Hinkley Metropark Bridle
Trails. Minutes from I-71, I-77 & I-271 in
NE Medina County.

High School Athlete Program

Earn your Equestrian High School Letter
330-239-2587
www.LedgeHollowStable.com

CMP Equine Transport, LLC
Medina, Ohio

*Professional, personal
horse transportation.*

Chris Pompos @ 330-350-6752
www.cmpequine.com

Join us on **facebook**

©2013 REGAL PUBLICATIONS

Calendar of Events



NODA Year-End Celebration & Awards Banquet

November 16, 2013
Crowne Plaza Hotel
Independence, Ohio

**Renew Your membership
by November 16
for a chance to win
A 2015 NODA Membership!**



US DRESSAGE FINALS

Presented by Adequan®

Nov. 7-10, 2013
Kentucky Horse Park

Qualify at one of the nine 2013 Great American Insurance Group/USDF Regional Dressage Championships. Training Level through Grand Prix; adult amateur and open divisions.

MAKE
SURE TO
DECLARE!

For Entry and Invitation Qualifications
www.usdressagefinals.com



**Complete calendar
listings with links
available on the
NODA Website**

www.nodarider.org

11/3 Chagrin Valley Farms Schooling Dressage Show

www.ChagrinValleyFarms.com
Bainbridge, OH Judge Connie
Wyatt (retired "r")

** NODA Members: Scores
eligible for 2014 NODA Year-
end Awards

11/7-10 USDF/Adequan US Dressage Finals, Kentucky Horse Park.

www.usdressagefinals.com

**11/8-10 Dressage Clinic with
Felicita von Neumann-Cosel**
Cheval Farm in Medina County,
OH. Contact Brenda 330-
239-4923 or [Cheval-
farm@yahoo.com](mailto:Cheval-farm@yahoo.com)

**11/16 NODA Celebration and
Awards Banquet, Crowne
Plaza Hotel, Independence,
Ohio** www.nodarider.org

**11/16 Renew Your 2014
NODA Membership** by
November 16 for a chance to
WIN a FREE 2015 NODA
membership.

**11/17-18 Dressage Clinic with
Carel Eijkenaar** at New Gotton
Farms in Oberlin, OH.
Contact: Michelle Tyner
440-774-7776 or
newgotton@frontier.com

12/4-8 Adequan/USDF Annual Convention Lexington Kentucky.

Members, register by 11/29
for a reduced fee. More
information at
www.usdf.org/CONVENTION/

12/1 Chagrin Valley Farms Schooling Dressage Show

www.ChagrinValleyFarms.com
Bainbridge, OH Judge Jackie
Smith (r)

** NODA Members: Scores
eligible for 2014 NODA Year-
end Awards

12/29 Chagrin Valley Farms Schooling Dressage Show

www.ChagrinValleyFarms.com
Bainbridge, OH Judge Barb
Soukup (L)

** NODA Members: Scores
eligible for 2014 NODA Year-
end Awards

2/2014 LAST NODA NEWS for
those members who have NOT
renewed their membership

2/2 Chagrin Valley Farms Schooling Dressage Show

www.ChagrinValleyFarms.com
Bainbridge, OH Judge T.B.A.

3/2 Chagrin Valley Farms Schooling Dressage Show

www.ChagrinValleyFarms.com
Bainbridge, OH

4/10-13 Equine Affaire

Columbus Ohio
www.equineaffaire.com

4/13 Chagrin Valley Farms Schooling Dressage Show

www.ChagrinValleyFarms.com
Bainbridge, OH

RIVENDEL FARM

DRESSAGE INSTRUCTION BOARDING - TRAINING

INDOOR & OUTDOOR RINGS - CROSS COUNTRY COURSE
QUALITY CARE - TURN OUT

Dale Lappert
"R" Dressage Judge

Garrettsville, OH
330-527-4683

Bonnie Gray
Instructor/Trainer

Planning an Event for 2014? NODA Wants to Know!

Sent Newsletter and Website Calendar Submissions

to Elizabeth Bross at
Elizabeth-editor@nodarider.org

And/Or

Linda Cooley at
webmaster@nodarider.org

Your event will be included space permitting. A full calendar is always available on NODA's website www.nodarider.org.

Grants ARE Available for ALL NODA MEMBER Equine Professionals

A fund to support professionals, trainers
and instructors with continuing education.

50% of Event Cost is Reimbursable
(Up to \$200 maximum)

Apply in writing to:

NODA Board
c/o Mary Dana Prescott
Cloverfield Farm
445 Metcalf Rd
Willoughby, OH 44094

Include:

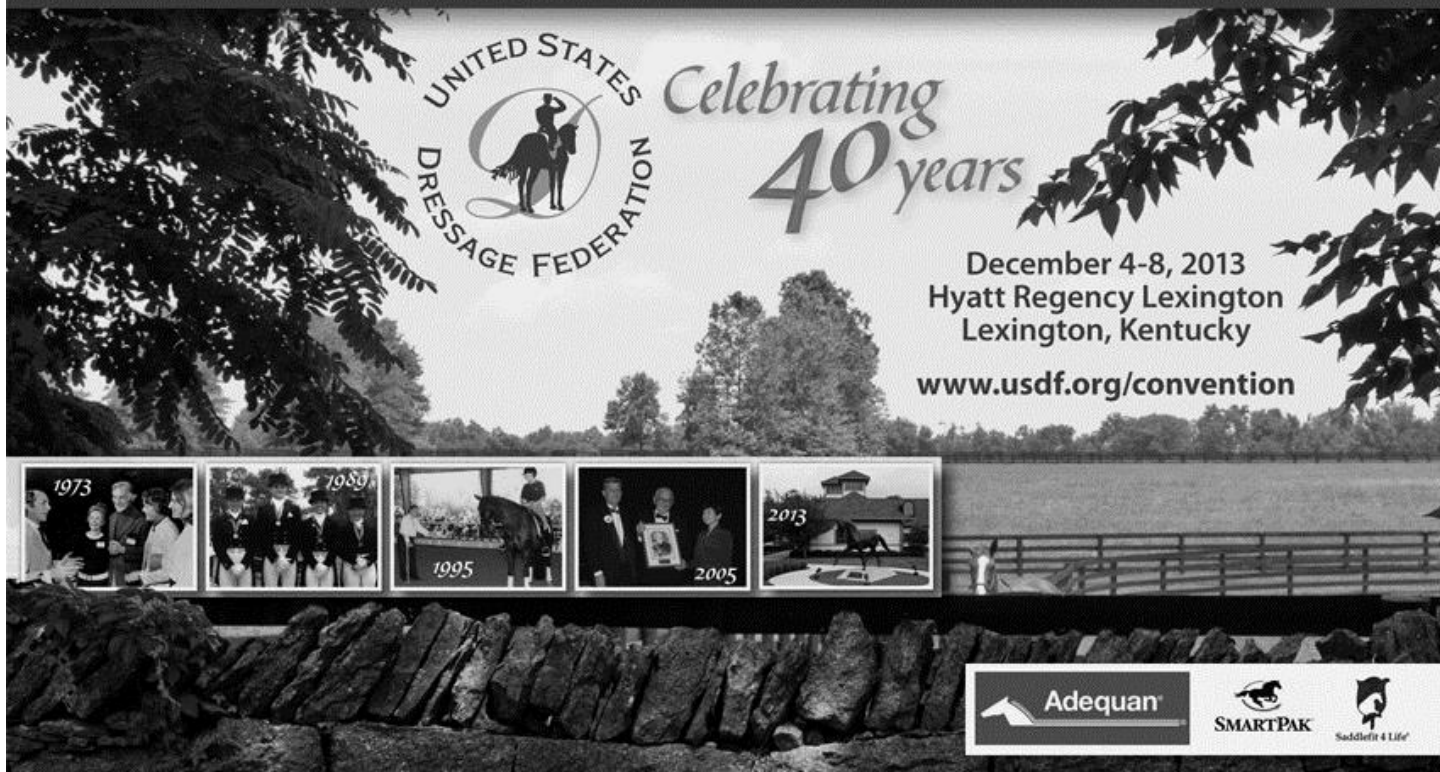
Why you should receive a grant, what function you plan to attend, and where it is to be held. State how you will share the content with NODA members (lecture, clinic, or article).

Questions?

Call Mary Dana at 440-256-8858

Membership Requirements: You must be a "professional" horseperson as defined by the current USEF rule book and a member in good standing with NODA.

2013 Adequan/USDF Annual Convention



The banner features the USDF logo (United States Dressage Federation) with a silhouette of a rider on a horse. To the right, it says "Celebrating 40 years". Below this, the dates "December 4-8, 2013" and location "Hyatt Regency Lexington, Lexington, Kentucky" are listed, along with the website "www.usdf.org/convention". A row of five small photos shows historical moments from 1973, 1980, 1995, 2005, and 2013. At the bottom right, there are logos for Adequan, SMARTPAK, and Saddlefit 4 Life.

UNITED STATES DRESSAGE FEDERATION Celebrating 40 years

December 4-8, 2013
Hyatt Regency Lexington
Lexington, Kentucky
www.usdf.org/convention

1973 1980 1995 2005 2013

Adequan SMARTPAK Saddlefit 4 Life

NODA News
3244 Camden Rue
Cuyahoga Falls, OH 44223

NONPROFIT
Bulk Rate
US Postage Paid
Permit No. 6
Novelty, OH 44072

NODA Newsletter and Web Advertising

Deadline: 10th of each month

Ex: Submissions received by the 10th of the month will publish in the NEXT ISSUE of NODA NEWS.

All Ads will be placed on the NODA website for the same period they are in the NODA NEWS.

Layout in jpg format should be emailed

to: Mosie-editor@nodarider.org

Advertising Rates

(width x height)	One ISSUE	Six ISSUES
Full Page (7.5 x 10):	\$75.00	\$375.00
Half Page (7.5 X 5):	\$40.00	\$200.00
Quarter Page (3.75 x 5):	\$20.00	\$100.00
Business Card (3.75 x 2):	\$15.00	\$75.00

Please complete form & enclose payment in full.

Make Check Payable to: NODA and send to:

NODA News, 3244 Camden Rue, Cuyahoga Falls, OH 44223

Please note **payment for ads** must be received **by the newsletter deadline of the 10th** for your ad to be placed in the next issue.

For Classifieds contact Classifieds@nodarider.org —see information on page 20 of this issue.

Date: _____ Number of issues ad will run: 1 issue ____ 6 issues ____ full year ____

Issue/year ad will run: _____ Ad Size: _____ Amount enclosed \$ _____ USD

Name: _____ Company: _____

Address: _____

City: _____ State: _____ Zip: _____

Phone: (_____) _____ E-mail: _____